

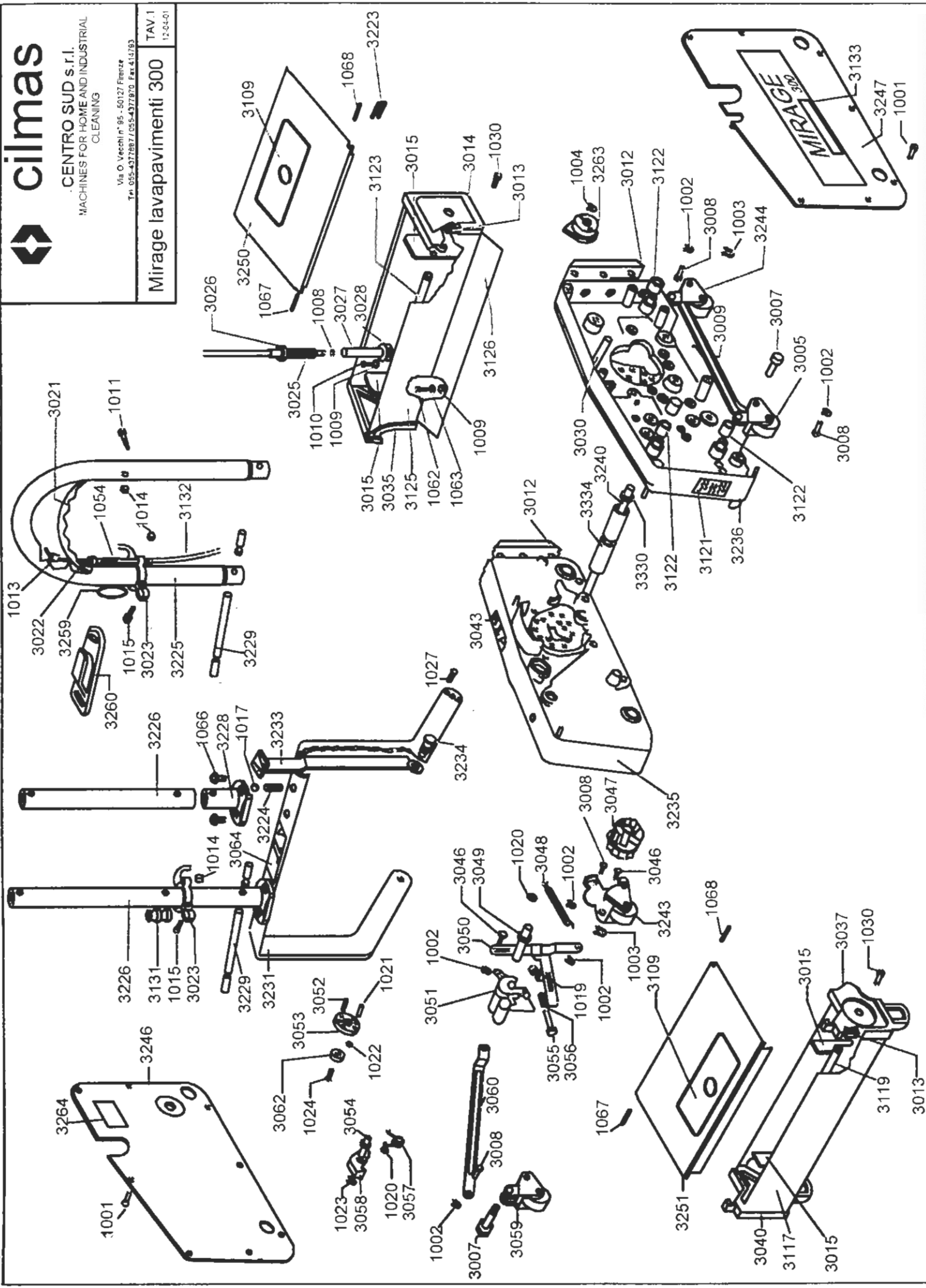


CENTRO SUD s.r.l.
MACHINES FOR HOME AND INDUSTRIAL
CLEANING

Via O. Vecchi n° 95 - 50127 Firenze
Tel. 055-437867/055-437870 Fax 414783

Mirage lavapavimenti 300

TAV. 1
12-04-01



MIRAGE 300 - PARTS LIST

CODE	DESCRIPTION	Q.TA'	CODE	DESCRIPTION	Q.TA'	CODE	DESCRIPTION	Q.TA'
1001	VSP M5X12 SOCKET HEAD SCREW	16	3028	GASKET	1	3172	MOTOR SIDE DRIVE END M/250-400	1
1002	EXT. D.5 SNAP RING	6	3030	THREADED PIN	1	3173	SPINDLE M/250-400	1
1003	EXT. D.10 SNAP RING	4	3035	CLEAN WATER CONTAINER SIDE	1	3174	16MF CONDENSER M/300-400	2
1004	EXT. D.9 SNAP RING	1	3037	DIRTY WATER CONTAINER SIDE	1	3175	CONDENSER HOUSING PIPE M/300	1
1008	OR RING CODE 2018	1	3040	DIRTY WATER CONTAINER SIDE	1	3176	POWER SUPPLY CABLE M/250-300	1
1009	M4 STAINLESS STEEL NUT	4	3043	HANDLE POSITION PLATE	1	3223	S. S. SPRING	1
1010	TE M4X8 STAINLESS STEEL SCREW	2	3046	D. 6 VERTICAL LEVER PIN	2	3224	SPRING FOR UNIONS	4
1011	VSP M4X30 SOCKET HEAD SCREW	1	3047	BRUSH ADJUSTMENT KNOB	1	3225	D. 28 HANDLE	1
1013	CLAMP	1	3048	CARRIAGE RETURN SPRING	1	3226	STUB PIPE M/250-400	2
1014	M4 NUT	10	3049	THREADER PIN	1	3228	BASIC UNIONS	2
1015	TC M4X20 SCREW	2	3050	CARRIAGE CONTROL LEVERS	1	3229	CONNECTING BAR	2
1017	D. 9/32 BALL	4	3051	COUPLING DEVICE	1	3231	FLAT HANDLE ATTACHMENT M/300	1
1019	M6 SELF-LOCKING NUT	7	3052	PLATE SPRING	4	3233	HANDLE CUTOFF LEVER	1
1020	D. 3 STOP RING	2	3053	CLUTCH PLATE	1	3234	PIN FOR CUTOFF LEVER	1
1021	D. 4X15 ELASTIC PIN	2	3054	TOOTH PIN	1	3235	KINEMATIC MOTION SIDE M250-300	1
1022	D. 3/16 BALL	7	3055	SWITCH OPERATION PIN	1	3236	MOTOR SIDE DRIVE SIDE M250-300	1
1023	EXT. D.6 SNAP RING	1	3056	COMPRESSION SPRING	1	3240	CARRIAGE CONTROL SHAFT M/300	1
1024	VSP M6X15 SOCKET HEAD SCREW	1	3057	SPRING	1	3243	WHEEL WITH SUPPORT	1
1025	240L 0.75 TIMING BELT	1	3058	PAWL	1	3244	WHEEL WITH SUPPORT	1
1027	VSP M5X14 SOCKET HEAD SCREW	2	3059	WHEEL WITH SUPPORT	1	3245	CONNECTOR BLOCK COVER	1
1028	BALL BEARING 603-2-RS	3	3060	WHEEL CONNECTION LEVER	1	3246	LEFT HAND SIDE COVER	1
1029	EXT. D.11 SNAP RING	2	3062	D. 20 WASHER	1	3247	RIGHT HAND SIDE COVER	1
1030	TCEI M6X25 SOCKET HEAD SCREW	6	3064	HANDLE DIRECTION LABEL	1	3250	CLEAN WATER TANK'S LID M/300	1
1031	BALL BEARING 6004-2 RS	2	3071	PLASTIC DISTANCE RING	4	3251	DIRTY WATER TANK'S LID M/300	1
1032	607 BEARING	4	3078	HEXAGONAL NYLON BUSHING M/500	3	3259	BRACKET HOLDER EYELET	1
1033	M6 SELF-LOCKING NUT	6	3086	D.12 W-RING	2	3260	CABLE PROTECTION BRACKET	1
1034	TE M4X15 SREW	1	3087	D. 7 SINTHERISED BUSHING	1	3261	D. 16 LONG W-RING	2
1035	D. 4X12 PLAIN WASHER	2	3088	D. 7 SINTHERISED BUSHING	1	3262	D. 16 SHORT W-RING	4
1036	SWITCH	2	3091	D. 9 SPLIT RING	1	3263	DRIVE END CAM	1
1037	FAIRLEAD	2	3092	BELT TIGHTENER SHAFT PIN	1	3264	BRUSHES REGULATION LABEL	1
1039	D. 4 WASHER	2	3093	GOOVED ROLLER	5	3330	D. 10 W-RING	2
1041	D. 5 SERRATED WASHER	4	3101	FAN	1	3332	D. 7 W-RING	2
1042	CABLE CLAMP	1	3109	CLEAN WATER TANK'S TRANSP LID	2	3334	D. 10 BELT GUIDE ROLLER M/300	1
1043	3.22 X 15 19 RAPID FIX	6	3113	TERMINAL BOARD	1	3335	BELT GUIDE ROLLER M/300	1
1044	FAIRLEAD	1	3114	CONNECTOR BLOCK	1	3355	RIGHT MOPLEN TERMINAL	1
1045	HK 25/12 ROLLER BEARING	3	3115	INSULATOR PLATE	1	3356	ENTRAINMENT SPACER	17/25
1046	D. 16 SPLIT RING	4	3117	DIRTY WATER CONTAINER M/300	1	3357	LEFT MOPLEN TERMINAL	1
1048	EXT. D. 7 SNAP RING	6	3119	DIRTY WATER TANK TIE-ROD M/300	1	3358	SEEGER RING	2
1051	D. 12 SPLIT RING	2	3121	TECHNICAL DATA LABEL M/300	1	3360	ROLLER HUB FOR M. 300	1
1054	GAITER	1	3122	INTERNAL BEARING RING M/250-40	1	3365	SUPPLEMENTARY WEIGHT FOR	1
1055	D.5 M/250-300 PLAIN WASHER	10	3123	CONNECTION TIE-ROD M/300	3	4002	COMPLETE MOTOR M/300	1
1056	D.5 SERRATED WASHER M/250-300	2	3125	CLEAN WATER TANK M/300	1	4006	COMPL DIRTY WATER CONT. M/300	1
1057	TCEI M5X12 SOCKET HEAD SCREW	4	3126	M/300 DRIP	1	4010	COMPLETE CLEAN WATER CONT. M/300	1
1059	D. 16 SHOULDER RING M/250-300	2	3131	FAIRLEAD	1	4013	CONTROL CABLE WAT VALVE C. M250	1
1060	124L 0.75 TIMING BELT	1	3132	BLACK GAITER M/250-400	1	4021	BROWN BRUSH M/300	1
1062	TE M4X6 STAINLESS STEEL SCREW	2	3133	SIDE LABEL M/300	1	4022	SOFT GREY BRUSH M/300	1
1063	D. 4X8X1 PLASTICE WASHER	2	3148	STAPLE M/250-400	1	4023	WHITE BRUSH M/300	1
1064	EXT. D. 9 SNAP RING	1	3149	PULLEY M/250-400	3	4024	ABRASIVE BRUSH M/300	1
1065	M4X35 GRUB SCREW	1	3150	BELT DRIVE SHAFT M/300	3	4033	RIGHT-HAND HELI GEAR M/250-300	1
1066	TE M6X8 CROSS SCREW	4	3151	HEXAGONAL AXIS M/300	1	4034	LEFT-HAND HELIC GEAR M/250-300	1
1067	ST-ST. PIN D. 4X12	2	3152	BELT TIGHTENER PIN M/250-400	2	4035	SERRATED PULLEYS BAND TRANSMIS	3
1068	ST. ST. PIN D. 4X26	2	3153	BELT TIGHTENER SUPP. M/250-400	1	4053	HEXAGONAL BUSH M/500-700	3
3005	WHEEL WITH SUPPORT	1	3154	RIGHT HELICAL GEAR M250-400	1	4058	COMPLETE HANDLE M/250-400	1
3007	THREADED PIN	2	3155	LEFT HELICAL GEAR M/250-400	1	4061	COMPLETE KINEMATIC MOTION SIDE	1
3008	D. 6 SHORT PIN	4	3156	BELT TIGHTENER SHAFT PUL.250-4	1	4062	COMPLETE TRANSMIS.SIDE M/250	1
3009	RIGH-HAND SIDE WHEEL CONNECT L.	1	3157	BLACK BRUSH M/300	1	4130	STAINLESS STEEL EXAG AXIS M300	2
3012	BUMPER	2	3158	BELT TIGHTENER SHAFT M/300	1	4157	WHITE ROLLER FOR M. 300	1
3013	GASKET	4	3159	SIDE SPACER M/300	2	4161	WHITE ABRASIVE DISK 0.86	26
3014	CLEAN WATER CONTAINER RT. SIDE	1	3160	D.7 BELT TIGHTENER SHAFT M/300	1	4163	BEIGE ROLLER FOR M. 300	1
3015	BREAKWATER	4	3162	BELT TIGHTENER SUPPORT M/250-4	1	4167	BEIGE ABRASIVE DISK	22
3021	VALVE CONTROL LEVER	1	3163	RUBBER BAND M/300	1	4169	GREEN ROLLER FOR M. 300	1
3022	STEEL CABLE	1	3165	BELT DRIVE ROLLER M/300	1	4173	GREEN ABRASIVE DISK	19
3023	CABLE FASTENING BRACKET	2	3168	MOTOR TIE-ROD M/300	1	4175	BROWN ROLLER FOR M. 300	1
3025	WATER CABLE STEEL SPRING	1	3169	MOTOR SIDE M/250-400	8	4179	BROWN ABRASIVE DISK	19
3026	PLASTIC KNURLED RING NUT	1	3170	MOTORS SHAFT WITH ROTOR M/300	1	4181	BLACK ROLLER FOR M. 300	1
3027	PLASTIC VALVE BODY	1	3171	STATOR M/300	1	4185	BLACK ABRASIVE DISK	18