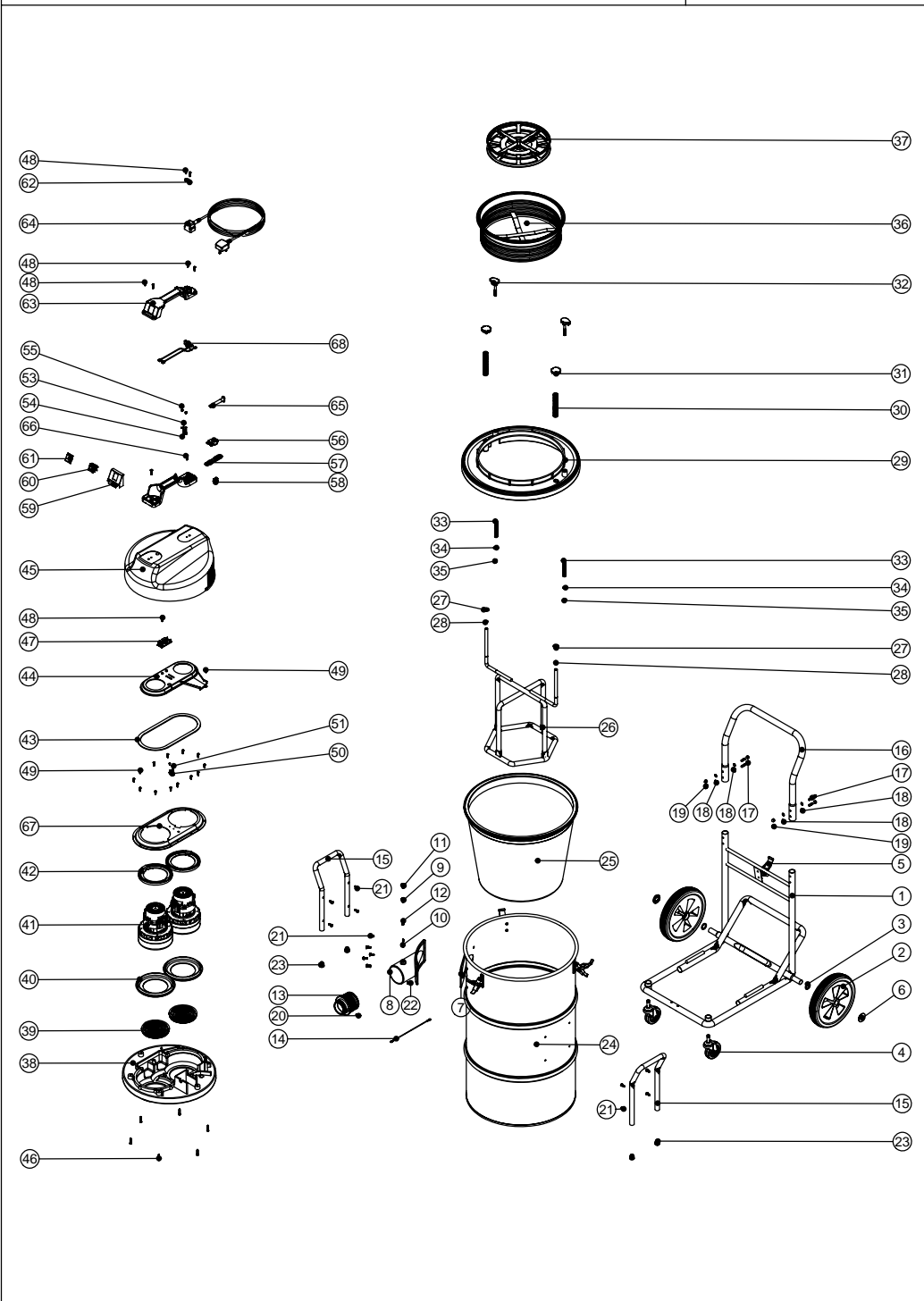


Numatic International Spare Parts

Model No: NTD2003-2 EXPLODED DRAWING

234367
DRAWING: EXP-0798 ISS:A03
30/06/2008



Numatic International Spare Parts

Model No: NTD2003-2 EXPLODED DRAWING

POS.	ITEM NO.	DESCRIPTION:	COMMENTS:
1	402016	BLACK HEAVY DUTY CHASSIS ASSEMBLY	
2	204028	10 INCH WHEEL	
3	219505	NYLON WASHER	
4	204060	3 INCH CASTOR	
5	206028	TOGGLE	
6	219504	STARLOCK PUSH ON FASTENER	
7	202050	1/8 INCH A/B EXPANDED NEOPRENE GASKET	
8	206171	3 INCH CYCLONIC INLET CONNECTOR MACHINED	
9	206169	DRUM LOCKING NUT	
10	206168	DRUM LOCKING PIN	
11	206167	DRUM KNOB	
12	219353	COMPRESSION SPRING	
13	206188	THREAD CONNECTOR MOULDING	
14	303121	BLANKING CAP FIX WIRE	
15	402011	BLACK HANDLE	
16	402202	BLACK PLASTIC COATED HANDLE	
17	219064	M6 X 35MM LONG HEX BOLT	
18	219007	M6 FORM B WASHER	
19	219080	M6 DOMENUT	
20	219101	No8 X 1/2 INCH LONG POZI PAN PLASTITE SCREW	
21	219045	M5 X 16MM LONG POZI PAN SEMS SCREW	
22	219050	M5 X 16MM LONG POZI PAN SCREW	
23	20638V	CSP-302 BLACK TUBE END STOP	
24	300199	CONNECTOR DRUM ASSEMBLY	
25	502016	FILTER ASSEMBLY	
26	402030	BLACK FILTER SHAKER ASSEMBLY	
27	206208	SEALING WASHER	
28	219345	12MM EXTERNAL CIRCLIP	
29	226021	BOTTOM PLATE MOULDING	
30	219333	COMPRESSION SPRING	
31	206241	SHAKER KNOB	
32	206242	HOOKED KNOB	
33	219418	COMPRESSION SPRING	
34	219010	M8 FORM A WASHER	
35	219078	M8 NYLON INSERT NUT	
36	207030	WHITE FILTER ASSEMBLY	
37	209600	DOUBLE 12 INCH FILTER GRID (GROOVED CIRCULAR RIB)	
38	301048	PROCESSED BOTTOM MOTOR HOUSING	
39	206010	FAN GUARD	
40	202005	MOTOR BOTTOM GASKET	
41	205411	240V 2 STAGE D.I BYPASS ACUSTEK MOTOR (BL21104)(MARKED 230V)	240V VERSION
	205410	220V 2 STAGE D.I BYPASS ACUSTEK MOTOR (BL21102) (MARKED 230V)	220V VERSION
	205409	120V 2 STAGE D.I BYPASS ACUSTEK MOTOR (BL21101)	115V VERSION
42	227925	TOP MOTOR GASKET	
43	202012	GASKET	
44	225154	AIR SEPARATOR DUPLEX	
45	227043	COVER MOULDING	
46	219369	No8 X 1 INCH LONG POZI PAN STAINLESS STEEL PLASTITE SCREW	
47	220555	230V DELAY START MODULE	220/240V VERSION
	220556	115V DELAY START MODULE	115V VERSION
48	219107	No6 X 5/8 INCH LONG POZI PAN PLASTITE SCREW	
49	219370	No8 X 5/8 INCH LONG PLASTITE STAINLESS STEEL SCREW	
50	220532	THERMOSTAT	
51	219491	M5 X 3MM LONG POZI PAN TAPTITE SCREW	
52	320835	HANDLE BASE MOULDING + INSERTS	
53	206562	CONTACT PIN	
54	206563	EARTH CONTACT PIN	
55	219090	M4 X 8MM LONG POZI PAN SEMS SCREW	
56	227631	TERMINAL COVER & CLAMP (3 PIN)	
57	227636	STRAIN RELIEF	
58	227637	CABLE CLIP	
59	227635	SWITCH MOUNTING BRACKET (1 SWITCH)	
60	220552	RED ROCKER SWITCH	
61	206573	SWITCH COVER (PLUG HANDLE)	
62	227564	PLUG LOCATION CLAMP	
63	227623	HANDLE COVER (10 AMP / 3 PIN / 1 SWITCH)	
	227627	HANDLE COVER HARD WIRE 1 SWITCH	HARDWIRED VERSION
64	236009	10.0M X 1.00MM X 2 CORE NUCABLE (UK PLUG)	
	236123	10.0MT X 1MM X 2 CORE YELLOW CABLE (SOCKET + PLUG) EURO	
	236017	10.0M X 1.00MM X 2 CORE NUCABLE (SWISS PLUG)	
	236021	10.0M X 1.00MM X 2 CORE NUCABLE (SOUTH AFRICAN PLUG)	
	236029	10.0M X 1.00MM X 2 CORE NUCABLE (AUSTRALIAN PLUG)	
	236065	10.0M X 2.5MM X 2CORE CABLE PLUS 32AMP INDUSTRIAL PLUG	HARDWIRED VERSION
65	220923	STRESS RELIEF	
66	219546	M5 X 20MM LONG POZI PAN SEMS SCREW	
67	325526	TOP MOTOR HOUSING (DUPLEX)	
68	220142	SUPPRESSOR ASSEMBLY	240V VERSION
	220234	SUPPRESSOR ASSEMBLY	220V VERSION
	220558	SUPPRESSOR ASSEMBLY	115V VERSION