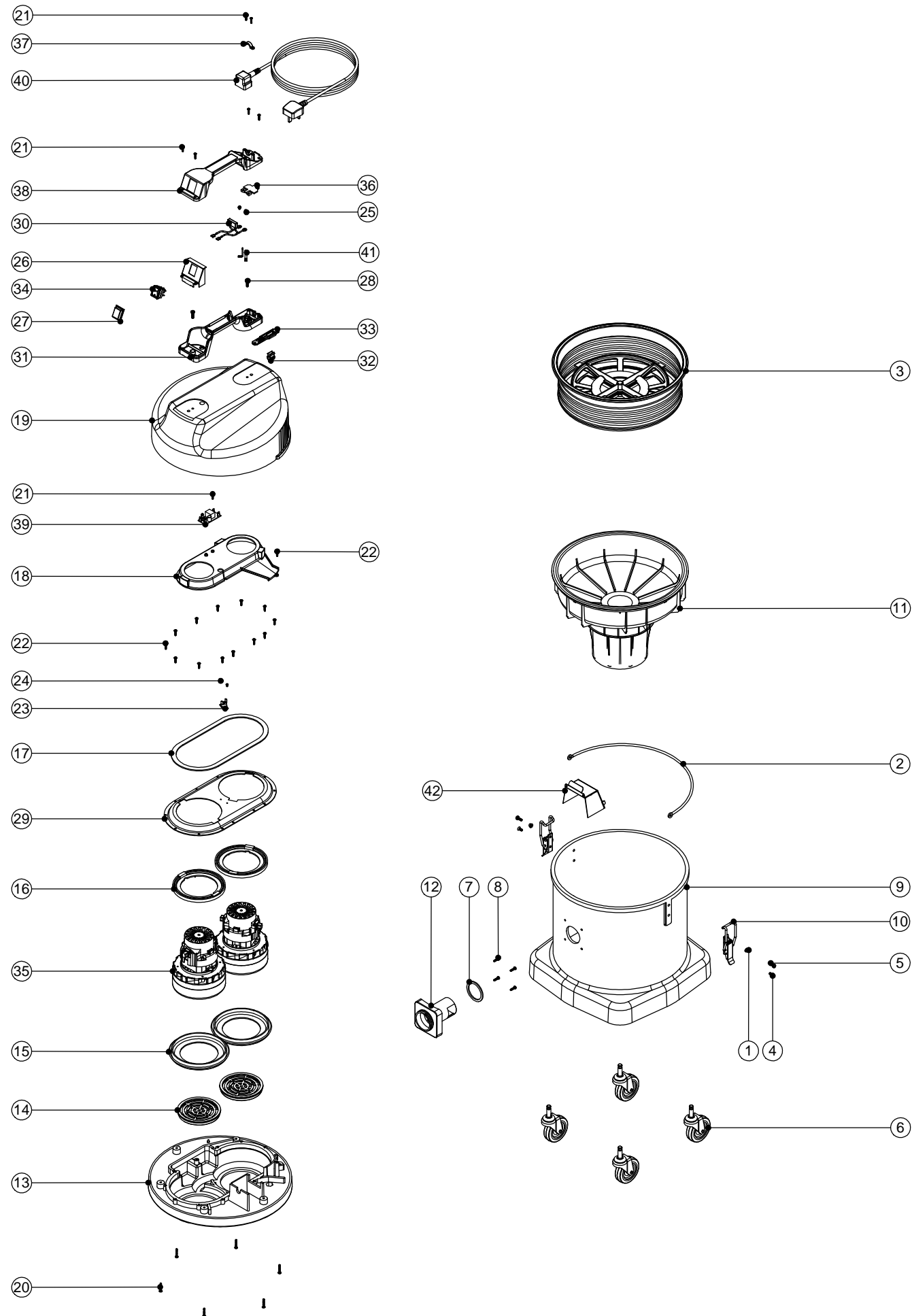


# Numatic International Spare Parts

## Model No: WVD570-2 EXPLODED DRAWING

234345  
DRAWING: EXP-0776 ISS:A05  
01/03/2012

NB: FOR WIRING DIAGRAM SEE DRAWING: WD-0255, WD-0257(120V), WD-0293(EURO,RSA,SWISS), WD-0357(TAIWAN)



# Numatic International Spare Parts

## Model No: WVD570-2 EXPLODED DRAWING

ITEM:	PART No:	DESCRIPTION	COMMENTS:
1	208025	SPACER BUCKET HANDLE	
2	418512	BLACK CRANKED BUCKET HANDLE	
3	604411	14 INCH COMBINATION MICROTEX FILTER ASSEMBLY	
4	219330	M5 X 12MM LONG POZI PAN COUNTERSUNK SCREW	
5	219045	M5 X 16MM LONG POZI PAN SEMS SCREW	
6	204060	3 INCH CASTOR	
7	202027	HOSE FLANGE GASKET	
8	219105	No8 X 5/8 INCH LONG POZI PAN PLASTITE SCREW	
9	325009	BLUE CONTAINER	
	325040	YELLOW CONTAINER	
	325039	GREEN CONTAINER	
	325008	RED CONTAINER	
10	206135	TOGGLE FASTENER	
11	502035	WV575/2000 FLOAT ASSEMBLY	
12	206117	HOSE CONNECTION FLANGE	
	214001	DIE CAST FLANGE	
13	301048	PROCESSED BOTTOM MOTOR HOUSING	
14	206010	FAN GUARD	
15	202005	MOTOR BOTTOM GASKET	
16	227925	TOP MOTOR GASKET	
17	202012	GASKET	
18	227928	570 AIR SEPERATOR (LAMB BYPASS MOTOR DUPLEX)	
19	227043	COVER MOULDING	
20	219369	No8 X 1 INCH LONG POZI PAN STAINLESS STEEL PLASTITE SCREW	
21	219107	No6 X 5/8 INCH LONG POZI PAN PLASTITE SCREW	
22	219370	No8 X 5/8 INCH LONG PLASTITE STAINLESS STEEL SCREW	
23	220532	THERMOSTAT	
	220659	THERMAL CUT OUT	TAIWAN 120V
24	219491	M5 X 3MM LONG POZI PAN TAPTITE SCREW	
25	219090	M4 X 8MM LONG POZI PAN SEMS SCREW	
26	227635	SWITCH MOUNTING BRACKET (1 SWITCH)	
27	206573	SWITCH COVER (PLUG HANDLE)	
28	219546	M5 X 20MM LONG POZI PAN SEMS SCREW	
29	225168	TOP MOTOR HOUSING	
	325128	MOD TOP MOTOR HOUSING	TAIWAN
30	220558	SUPPRESSOR ASSEMBLY	
	230151	220V SUPPRESSOR ASSEMBLY	EURO, SWISS, RSA
	321293	SUPPRESSOR ASSEMBLY (MODIFIED FOR FUSE HOLDER HANDLE)	TAIWAN
31	320686	HANDLE BASE MOULDING + INSERTS	
	320954	HANDLE BASE MOULDING + INSERTS V2	TAIWAN
32	227637	CABLE CLIP	
33	227636	STRAIN RELIEF	
34	220843	BLUE ROCKER SWITCH	
35	205411	240V 2 STAGE D.I BYPASS ACUSTEK MOTOR (BL21104)(MARKED 230V)	
	205409	120V 2 STAGE D.I BYPASS ACUSTEK MOTOR (BL21101)	UK-INDUSTRIAL
	205104	120V 2 STAGE BYPASS TAPER FAN MOTOR (BLT21101)	TAIWAN 120V
36	227632	TERMINAL COVER & CLAMP	UK, EURO, SWISS, RSA
	220131	CABLE CLAMP	UK-INDUSTRIAL, AUSTRALIA, TAIWAN
37	216290	CABLE CLAMP	UK, EURO
	227564	PLUG LOCATION CLAMP	SWISS, RSA
	220923	STRESS RELIEF	UK-INDUSTRIAL, AUSTRALIA, TAIWAN
38	229990	HANDLE COVER 16AMP 2PIN	UK, EURO
	227625	HANDLE COVER (10AMP / 2 PIN / 1 SWITCH)	SWISS, RSA
	227627	HANDLE COVER (CUT OUT FOR 1 SWITCH)	UK-INDUSTRIAL, AUSTRALIA
	325721	HANDLE COVER (FLAME RETARDENT/1 SWITCH/PROCESSED FOR FUSE HOLDER)	TAIWAN
	221330	15 AMP FUSE	
	221420	FUSE HOLDER ASSEMBLY	
39	220555	230V DELAY START MODULE	
	220556	DELAY START MODULE 115V	
40	236146	10 METER X 1.5MM X 2 CORE CABLE (SOCKET + UK PLUG)	
	236144	MAINS CABLE 10 M X 1.5MM X 2 CORE YELLOW CABLE (SOCKET + EURO PLUG)	
	236017	10.0MT X 1MM X 2 CORE CABLE (SOCKET + PLUG) SWISS	
	236044	10.0MT X 1.0MM X 2 CORE BLACK CABLE PLUS AUSTRALIAN PLUG	
	236021	10.0MT X 1MM X 2 CORE CABLE (SOCKET + PLUG) SOUTH AFRICA	
	236065	10M X 2CORE X 2.5MM CABLE PLUS 32AMP INDUSTRIAL PLUG	
	236112	MAINS CABLE (3 WIRE / 2MM / 10 METRE LONG BLACK TAIWAN CABLE)	
	236108	MAINS CABLE ( 2 CORE / 2.5MM / 10 METRE BLACK TAIWAN CABLE / SP-18A)	
41	206562	CONTACT PIN	
42	303482	WATER DEFLECTOR	MODELS WITH WATER DEFLECTOR