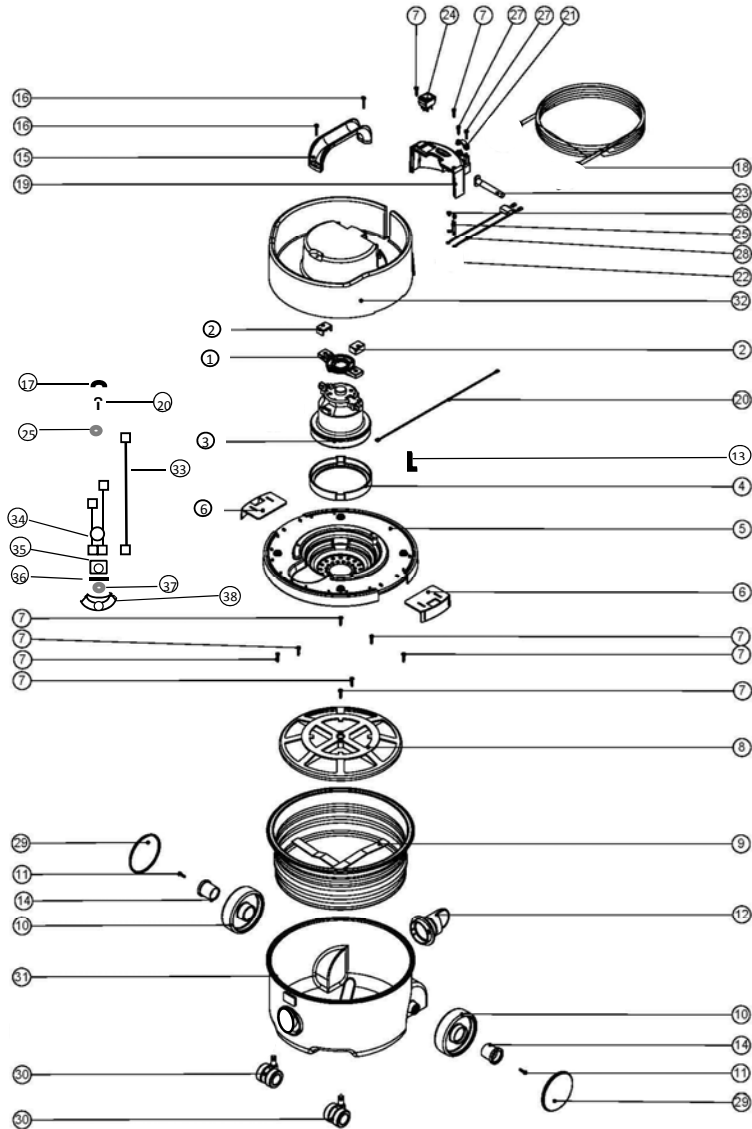


ANV 180-1 Exploded Drawing (2016 model)

Drawn by: P Simpson



Pos	Item No	Description
1	229513	MOTOR PLATE
2	227438	RUBBER END PAD
3	205460	120V 1 STAGE THRO FLOW CUP MOTOR (DL11101TA) TCO (AIRCRAFT)
4	202092	BOTTOM MOTOR GASKET (NUVAC PRO)
5	227423	BOTTOM MOTOR HOUSING ANV
6	227115	NVH/NVP/CVC/GVE TOGGLE
7	219041	NO8.3/4 INCH LG.POZI-PAN.SCREW.Z/PL
8	209200	12 INCH FILTER GRID (GROOVED CIRCULAR RIB) NO CLIPS
9	207109	12 INCH FILTER (DOUBLE BOTTOM) 160GRM SMS
10	227640	HENRY WHEEL 2 SHOT MOULDING
11	219105	NO8.5/8 INCH LG.POZI-PAN.SCREW.Z/PL.PLASTITE
12	237119	FRONT FIT BAG CONNECTOR
13	229426	CLIP HOLDER/ ACCESSORY CLIP
14	227868	WHEEL HUB FOR 2 SHOT WHEEL
15	206451	HANDLE (EXTRA-VAC)
16	291082	NO8 X 1 INCH PLASTITE T20 PAN SCREW
17	219616	COVER CAP
18	220757	25MT X 2 CORE X 1MM ORANGE CABLE STRIP
19	227424	SWITCH BOX (NUVAC PRO) YELLOW
20	219686	M4 x 20mm POZI PAN SCREW
21	903713	ANV WIRING INSERT
22	325212	TERMINAL BLOCK (NUVAC PRO PLUS INSERTS)
23	220923	STRESS RELIEF (NNV)
24	220552	RED ROCKER SWITCH (WHITE PRINT) 0 -1
25	219615	CAP RING
26	291151	M4 X 10MM LONG T20 SEMS SCREW Z/PL
27	219041	NO8.3/4 INCH LG.POZI-PAN.SCREW.Z/PL
28	902156	SUPPRESSOR ASSEMBLY 0.15uF X1 310V C/W TERMINAL INSULATORS
29	227690	YELLOW TRIM FOR 2 SHOT WHEEL
30	204000	40MM PU-TYRED BLACK TWIN WHEEL CASTOR SHORT STEM
31	500480	180 PARALLEL DRUM PLUS FACE (YELLOW)
32	227473	NVH/NVP SINGLE STAGE (LOW TOP)
33	220335	BROWN LINK WIRE
34	321175	ZENAMIC/MOTOR LEAD ASSEMBLY
35	220021	RECTIFIER
36	220521	INSULATION PLATE
37	219178	NEOPRENE WASHER
38	391409	ALUMINIUM HEAT SINK