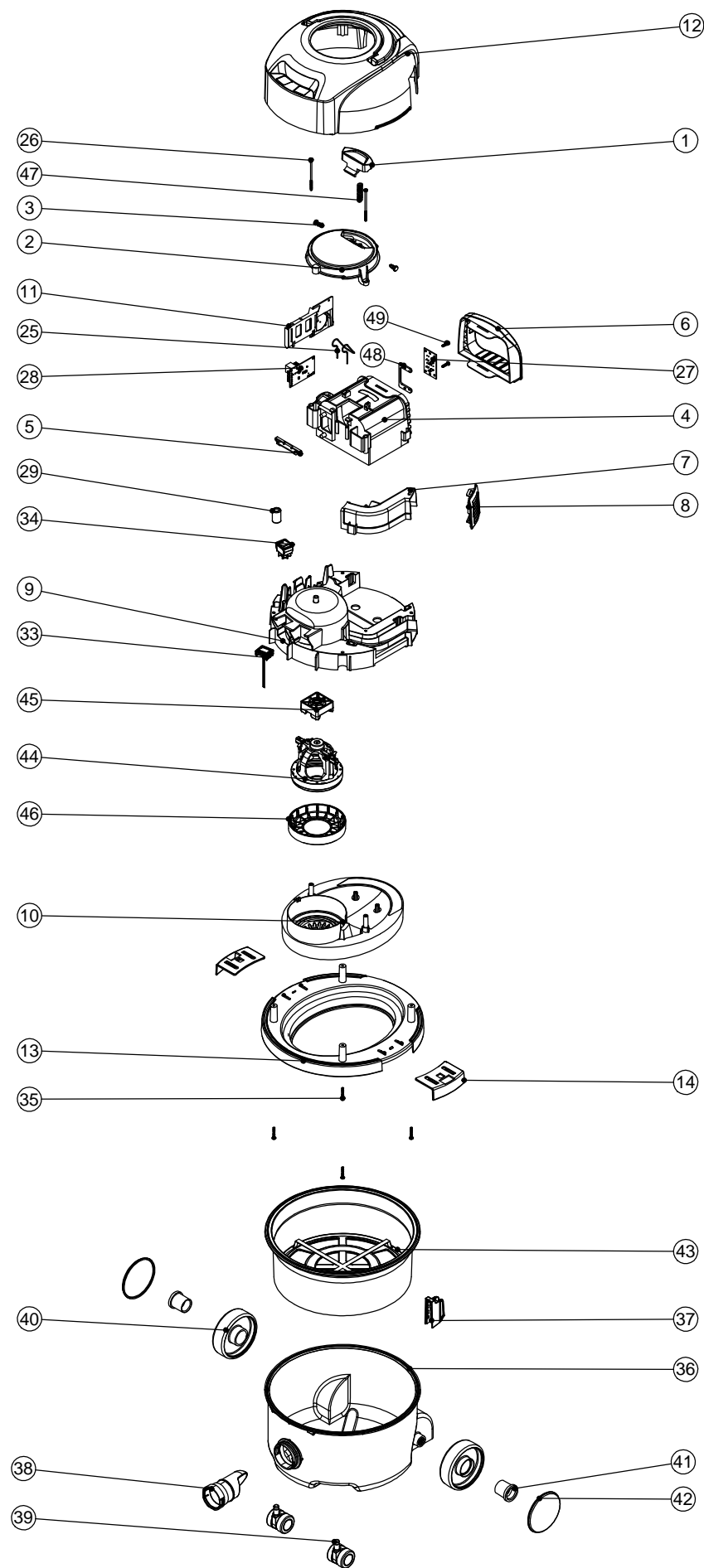


# Numatic International Spare Parts

**Model No: NBV (NUMATIC BATTERY VACUUM) EXPLODED DRAWING**

234995  
DRAWING: DRW-12540 ISS:A01  
14/02/2013

NB: FOR WIRING SEE DRAWING: DRW-12537



# Numatic International Spare Parts

**Model No: NBV (NUMATIC BATTERY VACUUM) EXPLODED DRAWING**

ITEM:	PART No:	DESCRIPTION	COMMENTS:
1	237604	BATTERY RELEASE CATCH	
2	237603	REELER CAP	
3	237597	BATTERY RELEASE TOGGLE - HINGE PIN	
4	237601	BATTERY POD	
5	237641	BATTERY RELEASE SPRING RETAINER	
6	237602	BATTERY POD FASCIA	
7	237600	EXHAUST DUCT	
8	237640	EXHAUST AIR DUCT FASCIA	
9	237598	MOTOR HOUSING	
10	237599	MOTOR ADAPTOR	
11	237642	PCB MOUNT & FAN HOUSING	
12	326092	PVR COVER + HANDLE PROCESSED FOR NBV BATTERY VAC	
13	326066	HARD EDGE BOTTOM MOTOR HOUSING PROCESSED FOR NBV BATTERY VAC	
14	237115	NRV HARD EDGE TOGGLE	
16	230211	NUMATIC LIPO BATTERY 36V	
25	216655	BATTERY RELEASE SPRING	
26	291049	No8 X 2.95 TX-PN-PLAST SCREW	
27	230223	BATTERY VAC CONNECTING PCB	
28	208559	POWER CONTROL PCB. SYNCHRONOUS BUCK CONVERTER	
29	230097	AXIAL FERRITE BEAD	
33	208625	LCD MODULE AND INTERCONNECTING LOOM	
34	220582 903963	GREEN ROCKER SWITCH - SINGLE SPEED MODEL GREEN ROCKER SWITCH - DUAL SPEED MODEL	
35	219104	No8 X 1 INCH LONG POZI PAN PLASTITE SCREW	
36	227487	RED 180 DRUM	
37	237373	DOCK	
38	237119	FRONT FIT BAG CONNECTOR	
39	204000	40MM PU-TYRED BLACK TWIN WHEEL CASTOR	
40	227640	2 SHOT WHEEL ASSEMBLY	
41	227011	BLACK WHEEL HUB CAP	
42	227687	2 SHOT WHEEL RED TRIM	
43	207109	12 INCH FILTER (DOUBLE BOTTOM) 160GRM SMS	
44	902326	36V DC MOTOR	
45	237617	MOTOR TOP MOUNT	
46	237616	MOTOR GASKET	
47	216465	11MM COIL SPRING	
48	392315	PCB SPACER	
49	219105	No8 X 5/8 INCH LONG POZI PAN PLASTITE SCREW	