

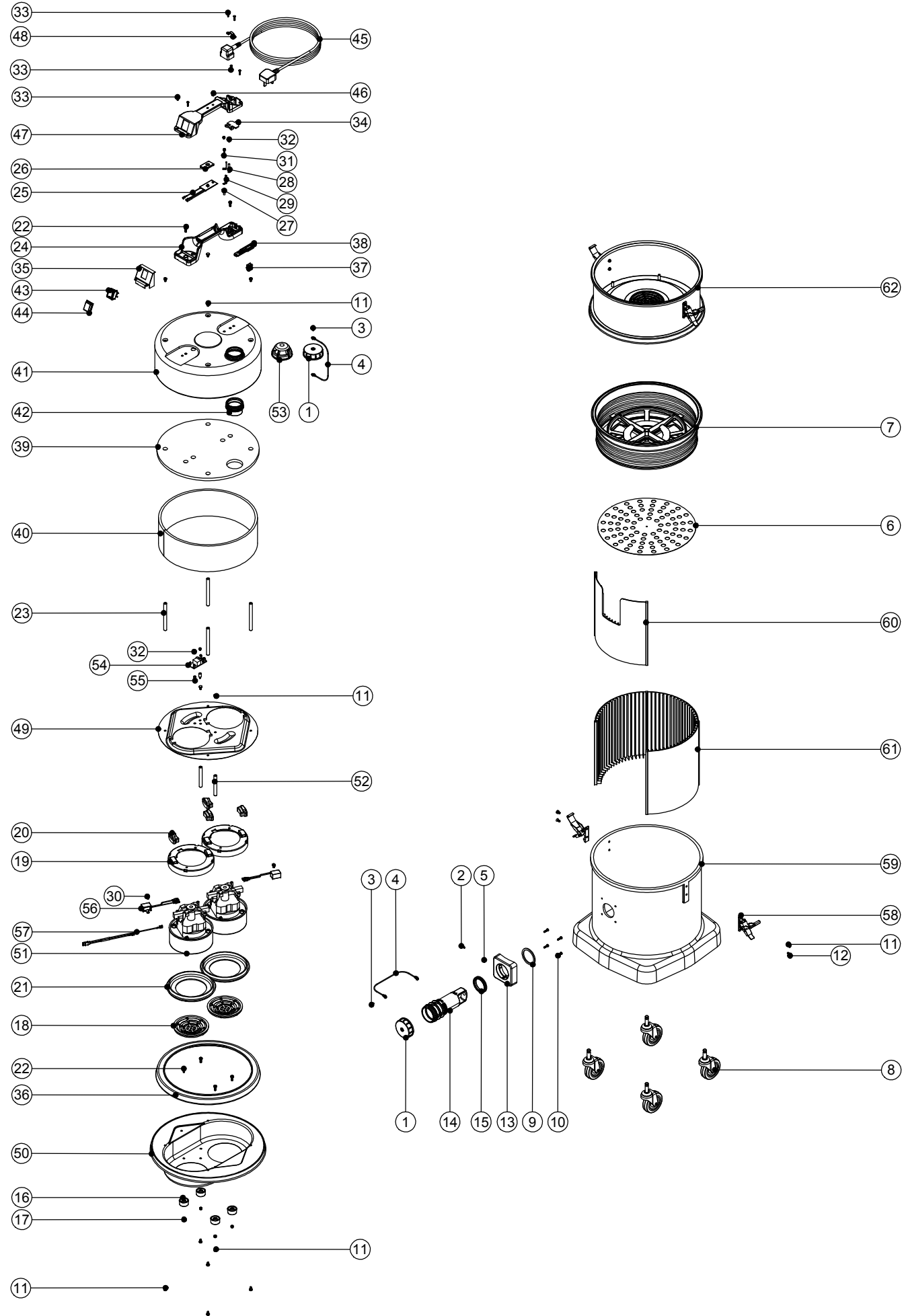
Numatic International Spare Parts

Model No: HZDQ 570-2 ASSEMBLY DRAWING

FOR WIRING DIAGRAM SEE: WD-0229

234374

DRAWING: EXP-0805 ISS:A05
20/02/2012



Numatic International Spare Parts

Model No: HZDQ 570-2 ASSEMBLY DRAWING

ITEM:	PART No:	DESCRIPTION	COMMENTS:
1	206363	BLANKING CAP	
2	219101	No8 X 1/2 INCH LONG POZI PAN PLASTIITE SCREW	
3	219301	No6 X 3/8 INCH LONG POZI PAN SELF TAP SCREW	
4	303037	BLANKING CAP FIXING WIRE	
5	219003	M5 FORM A STEEL WASHER	
6	401447	DRUM BASE (PAINTED GREY)	
7	502014	14 INCH COMBINATION MICROTUX FILTER ASSEMBLY	
8	204060	3 INCH CASTOR	
9	202027	HOSE FLANGE GASKET	
10	219105	No8 X 5/8 INCH LONG POZI PAN PLASTITE SCREW	
11	219047	M5 X 10MM LONG POZI PAN SEMS SCREW	
12	219330	M5 X 12MM LONG POZI PAN COUNTERSUNK SCREW	
13	305038	NDD BAYONET BAG CONNECTOR FRONT (DRILLED) HZ TYPE	
14	237342	BAG CONNECTOR TUBE	
15	202102	BAYONET SEAL	
16	206033	PLASTIC FOOT	
17	219076	M5 NYLON INSERT NUT	
18	227887	FAN GUARD	
19	227886	MOTOR SPACER	
20	229549	MOTOR MOUNTING RUBBER	
21	202005	MOTOR BOTTOM GASKET	
22	219045	M5 X 16MM LONG POZI PAN SEMS SCREW	
23	208002	115MM LONG ALUMINIUM SPACER	
24	320686	HANDLE BASE MOULDING + INSERTS	
25	220677	230V LOW FLOW INDICATOR DEVICE	
	220678	115V LOW FLOW INDICATOR DEVICE	
26	202086	LOW FLOW PCB MOUNTING GASKET	
27	220078	BRASS EARTHING SPACER	
28	206562	CONTACT PIN	
29	206563	EARTH CONTACT PIN	
30	219858	M5 x 8MM HEX WASHER FACED TAPFIX (DIN7500D)	
31	219274	M4 X 20MM LONG POZI PAN SCREW	
32	219090	M4 X 8MM LONG POZI PAN SEMS SCREW	
33	219107	No6 X 5/8 INCH LONG POZI PAN PLASTITE SCREW	
34	227631	TERMINAL COVER & CLAMP (3 PIN)	UK, EURO
	220131	CABLE CLAMP	UK-INDUSTRIAL
35	227635	SWITCH MOUNTING BRACKET (1 SWITCH)	
36	202002	BUFFER GASKET	
37	227637	CABLE CLIP	
38	227636	STRAIN RELIEF	
39	303027	TOP FELT PUNCHED	
40	203003	SIDE FELT	
41	401745	BLACK HEAD TOP	
42	206005	AIR OUTLET NECK	
43	220552	RED ROCKER SWITCH	
44	206573	SWITCH COVER (PLUG HANDLE)	
45	236011	10.0M X 1.50MM X 3 CORE NUCABLE (UK PLUG)	
	236143	10.0MT X 1.5MM X 3 CORE YELLOW CABLE (SOCKET + PLUG) EURO	
	236087	15.0MT X 3CORE X 1.5MM CABLE (SOCKET + PLUG) AUSTRALIAN PLUG	
46	220381	AMBER LENS	
47	321522	HANDLE COVER DRILLED FOR HZ (16 AMP) 3 CORE	UK, EURO
	320827	HANDLE COVER DRILLED FOR HZ (HARD WIRED)	UK-INDUSTRIAL
48	216290	CABLE CLAMP	UK, EURO
	220015	STRESS RELIEF SLEEVE	UK-INDUSTRIAL
49	401369	BLACK DUPLEX TOP MOTOR HOUSING	
50	401371	BLACK DUPLEX BOTTOM MOTOR HOUSING	
51	205407	230V 2 STAGE THRO FLOW TAPER FAN MOTOR (DL21104)(MARKED 230V)	
	205405	120V 2 STAGE THRO FLOW TAPER FAN MOTOR (DL21101)	
52	208001	80MM ALUMINIUM SPACER	
53	604151	AIR DIFFUSER FOR BLOWER TYPES	
54	220555	230V DELAY START MODULE	
	220556	DELAY START MODULE 115V	
55	219414	NYLON PILLAR	
56	220682	SUPPRESSOR ASSY WITH 2.48 TERMINALS	
57	230075	DUPLEX LAMB MOTOR BIMETALLIC OVERLOAD ASSY	
58	206023	TOGGLE LARGE CLAW	
59	300203	PROCESSED YELLOW PLASTIC CONTAINER	
60	308028	DRUM LINER (FOR ASSEMBLY VIEW ONLY)	
61	237048	DRUM LINER (FOR ASSEMBLY VIEW)	
62	604128	HZ HEPA DUPLEX MODULE FOR 356 MACHINE	