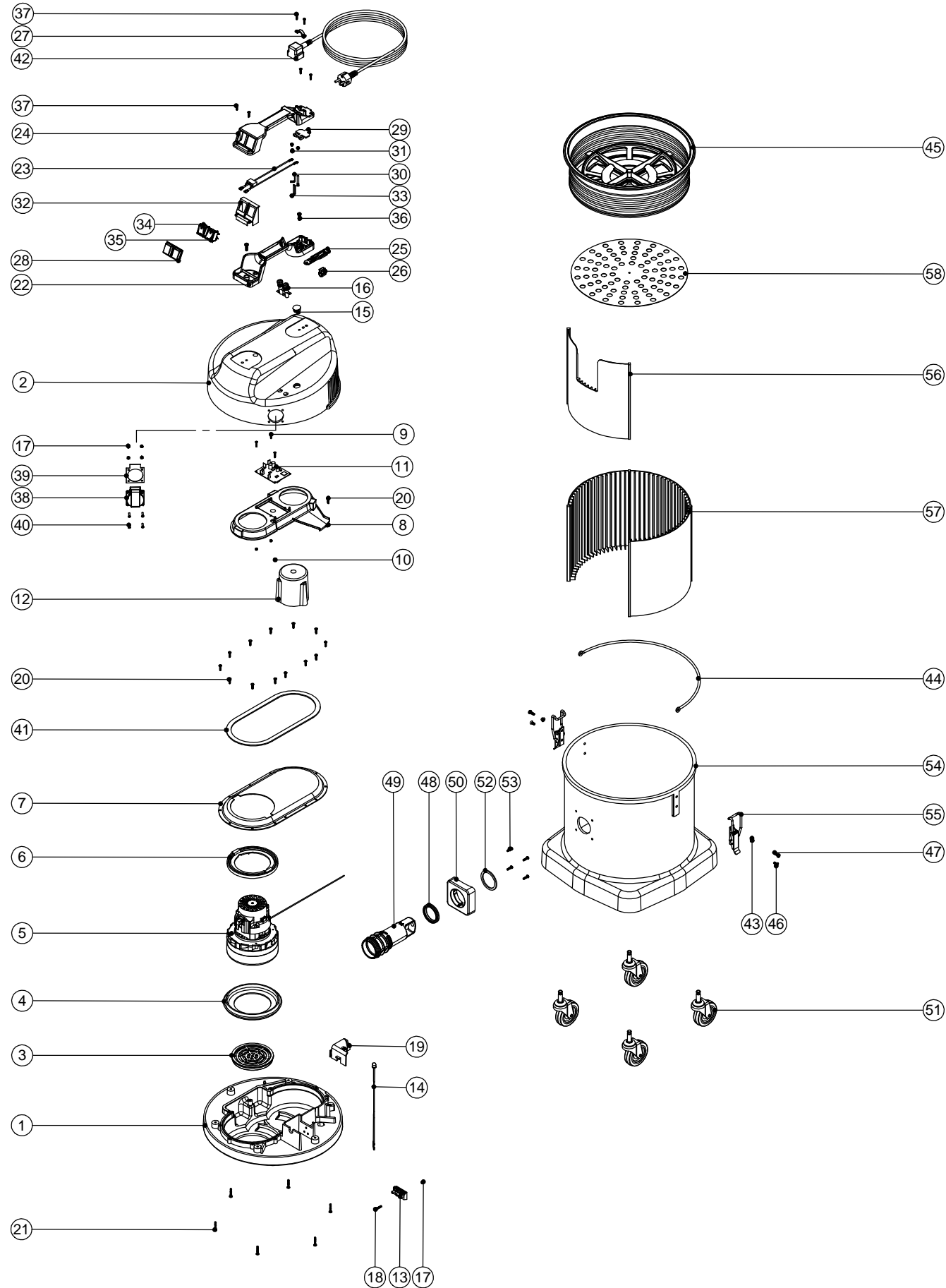


Numatic International Spare Parts

Model No: NDS 570A ASSEMBLY

NB: FOR WIRING SEE DRAWING: DRW-9937, DRW-9938

234859
DRAWING: DRW-7157 ISS: A03
09/02/2012



Numatic International Spare Parts

Model No: NDS 570A ASSEMBLY

ITEM:	PART No:	DESCRIPTION:	COMMENTS:
1	323008	REAR MOTOR REPLACEMENT SPACER	
2	323003	NDD COVER PROCESSED FOR 230V EURO PTO SOCKET / 2 FUSE HOLDERS + LOW FLO LED	
3	206010	FAN GUARD	
4	202005	MOTOR BOTTOM GASKET	
5	205443	240V 2 STAGE D.I BYPASS ACUSTEK MOTOR (BL21104T)(MARKED 230V)TCO(REF119847-00)	
6	227925	TOP MOTOR GASKET (LAMB BYPASS MOTOR)	
7	225177	NDS (FRONT MOTOR) SIMPLEX TOP MOTOR HOUSING	
8	237067	DUPLEX AIR SEPERATOR (FINE DUST SYSTEM)	
9	219038	M3.16MM LG.SLOT.SCREW.Z/PL	
10	219070	NUT.M3.NYLON INSERT.Z/PL	
11	230148	DUPLEX AUTO CONTROL PCB. 100-240VAC. 50/60HZ	
12	237278	REAR MOTOR REPLACEMENT SPACER	
13	208263	TERMINAL BLOCK REF 2012	
14	321555	LOW FLOW LED LOOM	
15	220967	WINDOW PLUG (TYPE WP 750) HEYCO REF: 438 1309	
16	221420	FUSE HOLDER (REF HTB-38M)	
17	219083	NUT.M4.NYLON INSERT.Z/PL	
18	21990V	M4.20MM LG.POZI-PAN.SCREW.Z/PL	
19	237069	LED HOLDER (DUSTCARE SYSTEM)	
20	219370	NO8.5/8" LG.POZI-PAN.SCREW.STAINLESS STEEL.PLASTITE	
21	219369	NO8.1 INCH LG.POZI-PAN.SCREW.STAINLESS STEEL.PLASTITE	
22	320835	HANDLE BASE MOULDING + INSERTS (3 CORE)	
23	230151	SUPPRESSOR ASSEMBLY(NVP/2 WIRE)	
24	227620	HANDLE COVER 16AMP 3PIN 2 SWITCH	
25	227636	STRAIN RELIEF ARM (SOCKET)	
26	227637	CABLE CLIP (SOCKET)	
27	216290	CABLE CLAMP 16A	
28	206573	SWITCH COVER (PLUG HANDLE)	
29	227631	TERMINAL COVER & CLAMP 3PIN	
30	206562	CONTACT PIN	
31	219090	M4.8MM LG.POZI-PAN.SCREW.Z/PL.SEM.	
32	227629	SWITCH MOUNTING BRACKET 2 SWITCH	
33	206563	EARTH CONTACT PIN	
34	220552	RED ROCKER SWITCH (WHITE PRINT)	
35	220582	GREEN ROCKER SWITCH (0-1) C1 55OVQ	
36	219546	M5.20MM LG.POZI-PAN.SCREW.Z/PL.SEM	
37	219107	NO6.5/8 INCH LG.POZI-PAN.SCREW.Z/PL.PLASTITE	
38	230162	EURO SOCKET (A1461000 EUROPE)	
	230164	SWISS SOCKET (A1461006 SWISS)	
39	230166	SOCKET GASKET	
40	219407	M4 X 16MM LONG POZI PAN COUNTERSUNK SCREW	
41	202012	GASKET	
42	236143	10.0MT X 1.5MM X 3 CORE YELLOW CABLE (SOCKET + PLUG) EURO	
	236019	10.0MT X 1.5MM X 3 CORE CABLE (SOCKET + PLUG) SWISS	
43	208025	SPACER BUCKET HANDLE WV575/750	
44	418512	BUCKET HANDLE CRANKED PNT BLACK	
45	502014	14 INCH WHITE FILTER ASSEMBLY	
46	219330	M5.12MM LG.POZI-PAN.SCREW.Z/PL.C/SUNK	
47	219045	M5.16MM LG.POZI-PAN.SCREW.Z/PL.SEM	
48	202102	BAYONET SEAL	
49	237342	BAG CONNECTOR TUBE	
50	237343	BAG CONNECTOR FRONT	
51	204060	3 INCH STEM FITTING CASTOR	
52	202027	HOSE FLANGE GASKET	
53	219105	NO8.5/8 INCH LG.POZI-PAN.SCREW.Z/PL.PLASTITE	
54	325132	572 GREY DRUM PUNCH & INSERT	
55	206135	TOGGLE FASTENER 30-1665 MSBL	
56	308028	DRUM LINER (FOR ASSEMBLY VIEW ONLY)	
57	237048	DRUM LINER (FOR ASSEMBLY VIEW)	
58	401447	DRUM BASE (FINE DUST VACUUM CLEANER) PAINTED GREY	