

Owner Instructions

Original Instructions

Warning! Read instructions before using the machine



HFS 1015/1023
HFM 1015/1023
HFM 1515/1523/1530
HFM 1545
HFT 1530

Edgar Edmondson Pty Ltd

Head Office
PO Box 198
Marrickville
NSW 1475
AUSTRALIA

Delivery and Shipping Address
18 Garden St
Marrickville
NSW 2204
AUSTRALIA

Office Number: 1800 BUY MOP
Fax Number: +61 (0)2 9519 9223
E-Mail: orders@edmondson.net.au
ABN: 27 000 450 144

Edco

Assembling the Machine



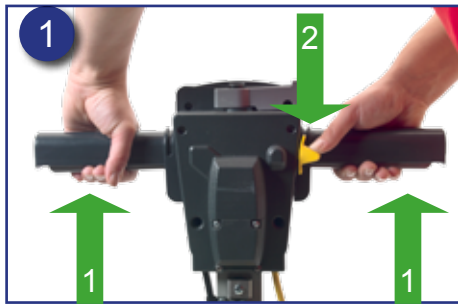
Fitting the Brush



Tipping the Handle



Operating the Machine



1 + 2 =



HFT 1530 Twin Speed



Low Speed = 150 rpm



High Speed = 300 rpm

Cable Release



Cable Storage





- 1 Company Name & Address
- 2 Voltage Frequency
- 3 Power rating
- 4 Machine Description
- 5 Splash Proof Rating
- 6 WEEE Logo
- 7 CE Mark
- 8 Weight (ready to use)
- 9 Machine yr/wk Serial number

1
Numatic
International Ltd
 Chard, England. TA20 2GB

4
HFM 1515

2
 220-240V 50Hz
 1500W
3
 150RPM
 INPUT WITH DUSTROL
 2350w TOTAL

5
 IPX4
6

7

8
 32 KG
9

 102714216

PPE (personal protective equipment) That may be required for certain operations.



Ear Protection



Safety Footwear



Head Protection



Safety Gloves



Eye Protection



Protective Clothing



Dust / Allergens Protection



Hi Viz Jacket



Caution Floorsign

NOTE:

A risk assessment should be conducted to decide what PPE should be worn.

Safety Critical Components

Mains Lead

HO5VV-F x 15M x 3 x 1.5mm²

WEEE Legislation

Floor Machine, accessories and packaging should be sorted for environmentally - friendly recycling

Only for EU countries:

Do not dispose of Floor Machine into household waste!

According to the European Directive 2002/96/EC on

Waste Electrical and Electronic Equipment and its incorporation into national law.

Floor Machine that are no longer suitable for use must be separately collected and sent for recovery in an environmentally - friendly manner.



Floor Machine Maintenance Guidelines

Daily

Keep the machine clean.

Ensure brushes/ pads are in good condition.

Check for any worn or damaged parts and replace immediately.

Do not leave your machine standing on brush, pads or drive boards when not in use.

Weekly - as daily and:-

Regularly examine the power cord.





ORIGINAL INSTRUCTIONS
Read the instruction manual
before using the appliance

Information for Floor Machines



CAUTION

This Product meets the requirements of IEC 60335 - 2-67

This Machine is also suitable for commercial use, for example in hotels, schools, hospitals, factories, shops, rental businesses and offices for other the normal housekeeping purposes.

Care should be taken in the choice of chemicals, detergents and other liquids. Consult your supplier.

This appliance is not intended for use by persons (including children) with reduced physical sensory or mental capabilities, or lack of experience and knowledge.

Unless they have been given supervision or instruction concerning the use of the appliance by a person responsible for their safety.

Do's and Don'ts:

- DO Ensure only competent persons unpack/ assemble the machine.
- DO Keep your machine clean.
- DO Keep your brushes in good condition.
- DO Replace any worn or damaged parts immediately.
- DO Daily examine the mains lead for damage, such as cracking or ageing. If damaged is found, replace the lead before further use.
- DO Only replace the mains lead with the correct Numatic approved replacement part.
- DO Ensure that the work area is clear of obstructions and/ or people.
- DO Ensure that the working area is well illuminated.
- DO Pre - sweep the area to be cleaned.
- DON'T Use steam cleaners or pressure washers to clean the machine or use in the rain.
- DON'T Attempt machine maintenance or cleaning unless the power plug has been removed from the supply outlet.
- DON'T Allow any inexperienced repairs. Contact your nearest service centre.
- DON'T Strain the mains lead or try to unplug by pulling on the mains lead.
- DON'T Expect the machine to provide trouble free, reliable operation unless maintained correctly.
- DON'T Run the machine over any power cables during operation.
- DON'T Leave your machine standing on brush, pads or drive boards when not in use.



WARNING

Operators shall be adequately instructed on the use of this machine.

This machine shall be disconnected from its power source (Remove plug from socket outlet.) During cleaning or maintenance or in the event of an accident and when replacing parts or converting the machine to another function.

This machine is not suitable for picking up hazardous dust.

Do not allow supply cord to come into contact with the rotating brushes or pads

As with all electrical equipment care and attention must be exercised at all times during its use, in addition to ensuring that routine and preventive maintenance is carried out

Periodically in order to ensure its safe operation. Failure to carry out maintenance as necessary, including the replacement of parts to the correct standard could render the equipment unsafe and the manufacturer can accept no responsibility or liability in this respect.

When ordering spare parts always quote the model number / serial number specified on the rating plate.

This machine is for indoor use only.

The machine is not to be used or stored outdoors or in wet conditions.

Don't allow the machine to be used by inexperienced or unauthorised operators or without appropriate training.

Only use brushes provided with the appliance or those specified in the instruction manual.

The use of other brushes may impair safety.

A full range of brushes and accessories are available for this product.

Only use brushes or pads which are suitable for the correct operation of the machine for the specific task being performed.

It is essential that this equipment is correctly assembled and operated in accordance with current safety regulations.

When using the equipment always ensure that all necessary precautions are taken to guarantee the safety of the operator and any other persons who may be affected.

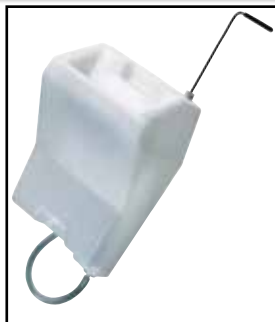
	Motor	Speed	Optional Vacuum	Brush	Pad	Range	Weight	Sound Pressure dB(A)@1.7M	HAV M/S ²	Dimensions
HFS 1015	1000W	150rpm	DT 130	400mm	360mm	32m	26Kg	64.6 dB(A)	1.78	1250x560x410mm
HFS 1023	1000W	230rpm	DT 130	400mm	360mm	32m	26Kg	69.6 dB(A)	2.35	1250x560x410mm
HFM 1015	1000W	150rpm	DT 130	450mm	400mm	32m	26Kg	64.7 dB(A)	1.76	1250x560x460mm
HFM 1023	1000W	230rpm	DT 130	450mm	400mm	32m	26Kg	69.8 dB(A)	2.33	1250x560x460mm
HFM 1515	1500W	150rpm	DT 130	450mm	400mm	32m	32Kg	66.6 dB(A)	1.54	1250x560x460mm
HFM 1515 (115V)	1500W	150rpm	N/A	450mm	400mm	32m	32Kg	67.5 dB(A)	1.45	1250x560x460mm
HFM 1523	1500W	230rpm	DT 130	450mm	400mm	32m	32Kg	69.0 dB(A)	2.11	1250x560x460mm
HFM 1530	1500W	300rpm	DT 130	450mm	400mm	32m	32Kg	62.8 dB(A)	1.78	1250x560x460mm
HFM 1545	1500W	450rpm	DT 130	450mm	400mm	32m	32Kg	70.4 dB(A)	1.63	1250x560x460mm
HFT 1530	1000/1250W	150/300 rpm	DT 130	450mm	400mm	32m	32Kg	70.2 dB(A)	1.04	1250x560x460mm
HAV = Hand Arm Vibration (uncertainty 20%)										

Spare Parts

MACHINE/ MODELS NO.s	MOTOR	GEARBOX	START CAP	RUN CAP	VOLTAGE RELAY	HANDLE RELAY
HFS 1015	205201	230206	205088	208651	208582	206575
HFS 1023	205201	230210	205088	208651	208582	206575
HFM 1015	205201	230206	205088	208651	208582	206575
HFM 1023	205201	230210	205088	208651	208582	206575
HFM 1515	205202	230206	205088	220897	902715	206575
HFM 1523	205202	230210	205088	220897	902715	206575
HFM 1530	205202	230209	205088	220897	902715	206575
HFM 1545	205204	230210	205088	220897	902715	206575
HFT 1530	205205	230206	205088	220897	206824	206575

Notes:

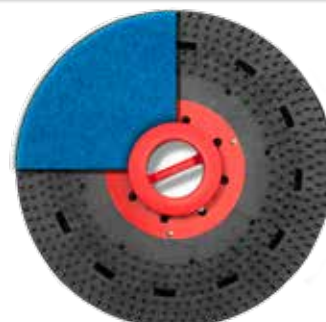
HFM Floorcare Accessories



FMA- 606890
HFM Sololution Tank.(8ltrs)



FMA-606077:- HFM
10Kg weight



FMA-606401:- 400mm
PadLoc Drive Board



FMA-606615:- HFM
optional spraytec Kit
(1.5ltrs)



FMA-606202:- 450m Union
Mix Polish Brush



FMA-606700:- 400m
Porcupine Pad Holder



FMA-606178:-
HFM Dustrol Kit
(DT 130) (850W)



FMA-606203:-
450 Polyscrub Brush



FMA-60115:- 550mm
Union mix Polish brush



FMA-606250:-
HFM
Dust Filter Kit



FMA-606204:-
450mm Nyloscrub Brush



Floor Machines Application Chart

		Scarifying 4,5,6	Stripping 7	Shampoo 3	Spray Cleaning	Wet Scrubbing 2,8,9	Dry buffing 1,9	Light Spray Buff 9	Low Gloss Polish 1	Medium Gloss Polish 1,9	High Speed Polish 9
HFS 1015	1000W 150rpm		✓	✓	✓	✓			✓		
HFS 1023	1000W 230rpm		✓	✓		✓	✓		✓		
HFM 1015	1000W 150rpm		✓	✓	✓	✓			✓		
HFM 1023	1000W 230rpm		✓	✓		✓	✓		✓		
HFM 1515	1500W 150rpm	✓	✓	✓	✓	✓			✓		
HFM 1523	1500W 230rpm		✓	✓		✓	✓		✓		
HFM 1530	1500W 300rpm					✓	✓	✓	✓	✓	
HFM 1545	1500W 450rpm				✓		✓	✓		✓	✓
HFT 1530	1000/1250W 150-300rpm				✓	✓	✓	✓	✓	✓	

Numatic Brush Description

1. Union Mix Polishing Brush FMA-606102, FMA-606202, FMA-606702 (Bristles Brown).
2. Polypropylene Scrubbing Brush FMA-606105, FMA-606203, FMA-606703 (Outer Bristles Green).
3. Nylon Wet Shampoo Brush FMA-606108, FMA-606204, FMA-606704 (All Bristles White).
4. Scarifying Wire Brush FMA-606114, FMA 606706 Floor Preparation.
5. Three head silicon Carbide Grind Discs FMA-606208 Floor Preparation.
6. Spirotex FMA-606211 Six Head Heavy duty Scarifying Brush Floor Preparation.

Floortec Padless Brush System (Colour Coded Centre Bristles).

7. Black Centre Coded, Heavy duty Scrubbing and Stripping FMA-606301/ FT400-1, FMA-606305/ FT450-1, FMA 606315/ FT500-1.
8. Green Centre Coded, All purpose General Scrubbing Brush FMA-606302/ FT400-2, FMA-606306/ FT450-2, FMA-606316/ FT500-2.
9. Red Centre Coded, Light Scrubbing when wet, General polishing when dry, FMA-606303/ FT400-3, FMA-606307/ FT450-3, FMA-606317/ FT500-3.

Note: 10KG & 20Kg Weight, use only on **standard speed** machines for wet / dry scrubbing, vitrification and crystallisation.



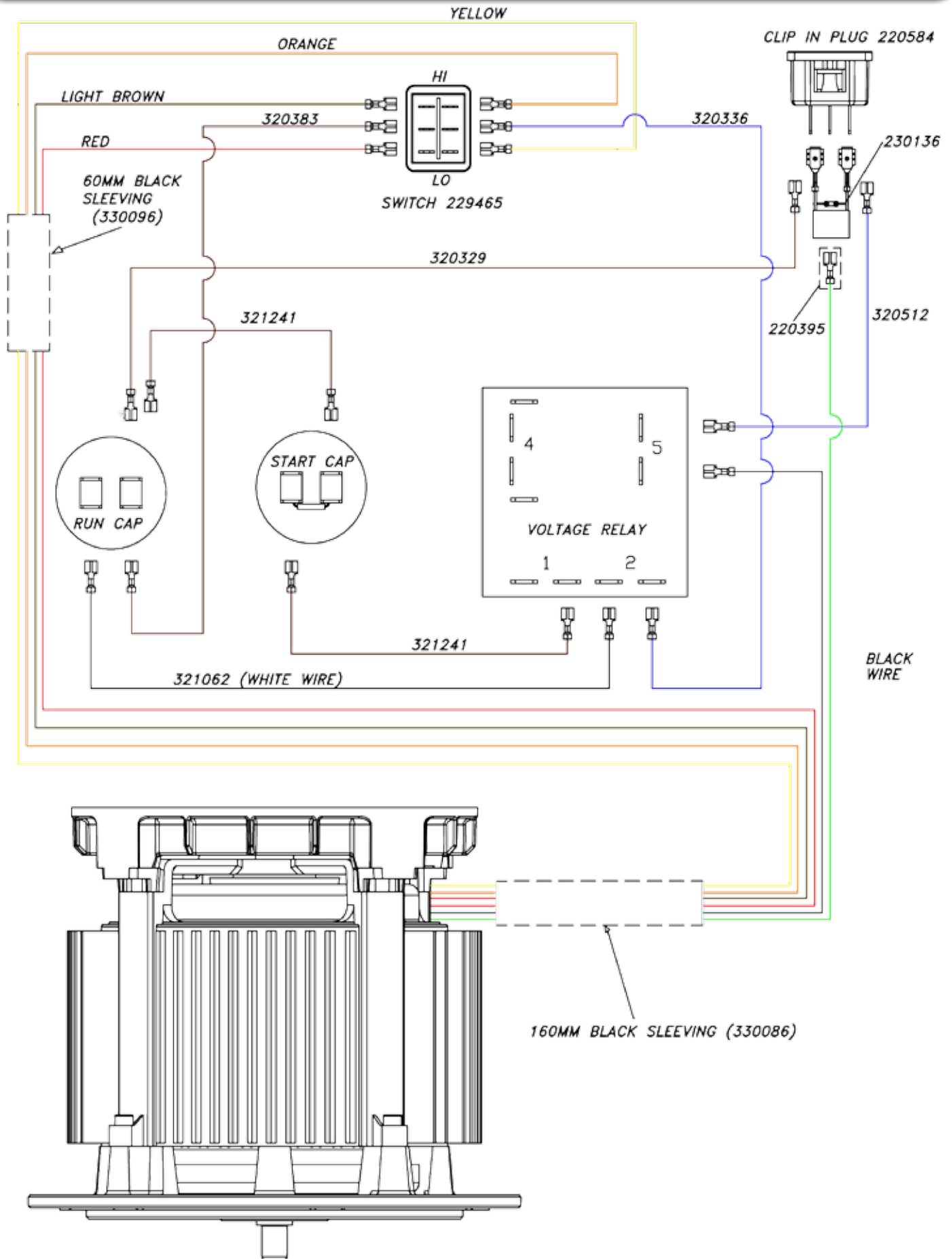
Kit DT130 FMA-606178 vacuum kits are for dry pick up only **DO NOT** use on wet surfaces.

Important:

Only use the socket outlet on the appliance for Numatic recommended parts.

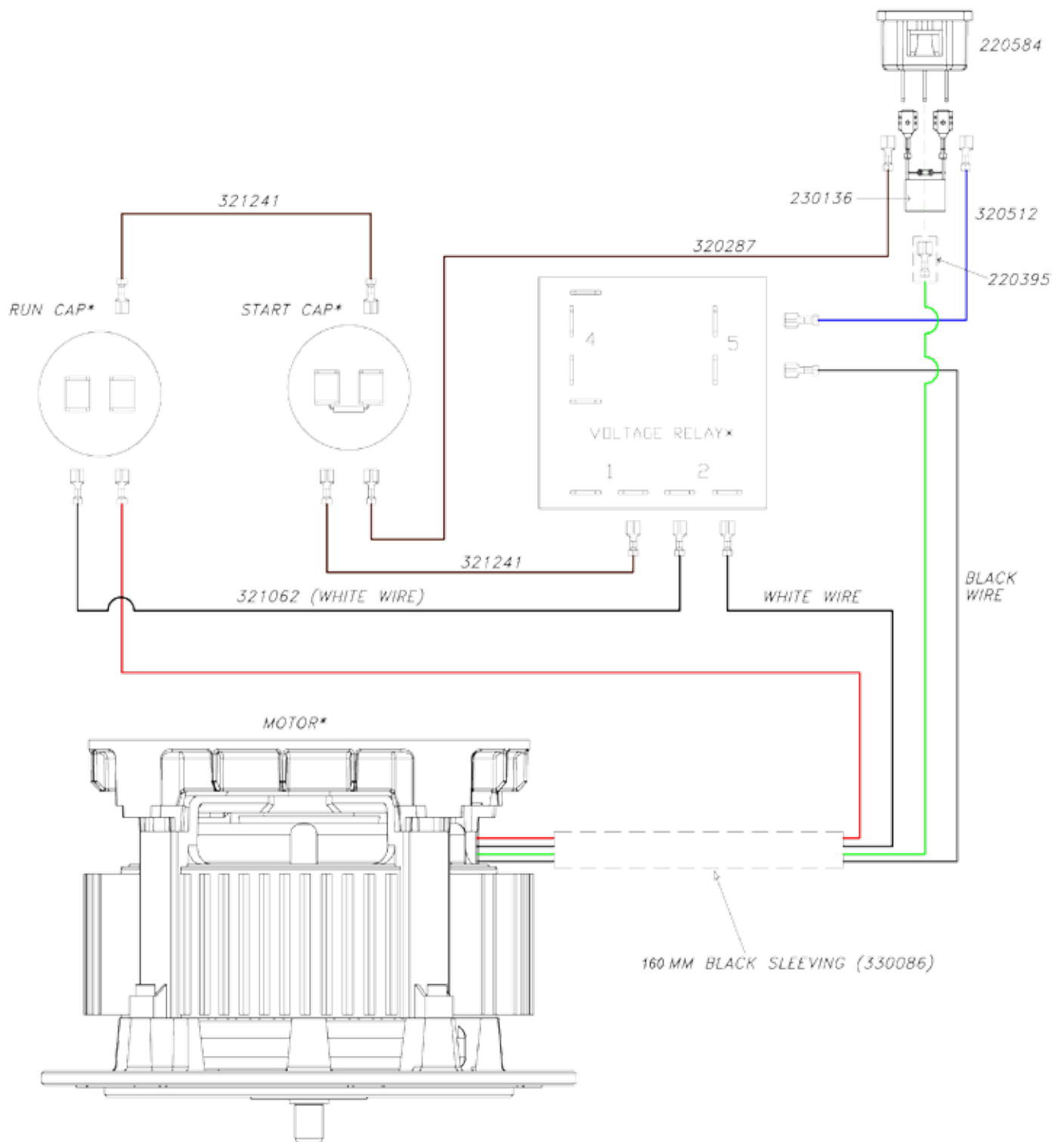
HFT 1530

DRW-12031 06-11-12 (A01) (Floor Machine)



HFS / HFM 1000W / 1500W

DRW-11701 26-09-12 (A01) (Floor Machine)



Declaration of Conformity



EU DECLARATION OF CONFORMITY

We hereby declare under our sole responsibility that the following equipment fulfils all the relevant provisions of the following EU Directives:

Machinery Directive 2006/42/EC

EMC Directive 2014/30/EU

RoHS Directive 2011/65/EU

Machine Description:
Type: HFM, HFS, HFT HNS series

Floor Machine

Manufactured by: Numatic International Limited

Relevant standards upon which conformity is declared include:

IEC 60335-1 2010 + National Deviations
IEC 60335- 2-67 2012

EN 55014-1:2006+A2:2011
BS EN 55014-2:1997+A2:2008
BS EN 61000-3-2:2006+A2:2009
BS EN 61000-3-3:2008
EN 62233:2008

A technical construction file for this equipment is retained at the manufacturer's address under the authorisation of the following signatory:

Name: Allyn Boyes

Position: Technical Manager

Signed:

Date: 20/04/2016



Numatic International Limited,
Chard, Somerset.
TA20 2GB
www.numatic.co.uk

GB



Warranty

Numatic International Limited warrant to the original purchaser that its products are free of defects in both material and workmanship for the period shown below:-

Homecare and Procare Vacuum cleaners..... 2 Years

Rotary Floor Machines..... 1 Year

Twintec Auto Scrubber Dryer..... 1 Year

Vario Ride-On Scrubber Dryer..... 1 Year / 1500 hours

Mopping, Compacts, Versaclean and Versacare Products..... 1 Year

Individual Accessories and Spare Parts..... 6 Months

Note: This warranty expressly excludes consumable parts such as carbon brushes, floor brushes, mops, batteries etc, that are considered replaceable from time to time during the normal working life of the machine.

Our goods come with guarantees that cannot be excluded under the Australian Consumer Law. You are entitled to a replacement or refund for a major failure and for compensation for any other reasonably foreseeable loss or damage. You are also entitled to have the goods repaired or replaced if the goods fail to be of acceptable quality and the failure does not amount to a major failure.

The benefits under (Our Warranty) are in addition to other rights and remedies under a law in relation to the (goods/services)

A. The warranty period commences from the date the goods are purchased. We advise all purchasers to retain their invoice as proof of purchase.

B. All warranty claims must be processed through either the Dealer from whom the equipment was originally purchased or another authorised Edgar Edmondson Pty Ltd Australia dealer. The Dealer will co-operate with the purchaser throughout the warranty claims procedure and will arrange any necessary repairs using genuine Numatic parts.

C. If the original Dealer is no longer able to fulfil his obligations please contact Edgar Edmondson Pty Ltd Australia with full details of the claim and proof of purchase so that this may be processed without delay.

D. Any warranty claim can only relate to the specific part that is proven to be at fault and for which a replacement will be supplied but cannot be extended to constitute a claim against the complete machine.

E. Edgar Edmondson Pty Ltd Australia will supply the Dealer with any warranty parts required, subject to the claim being validated.

F. Claims will not be accepted if they are the result of fair wear and tear, misuse or abuse of any kind.

G. No replacement will be given unless the appropriate evidence of the validity of the claim has been provided to the satisfaction of Edgar Edmondson Pty Ltd Australia.

H. Edgar Edmondson Pty Ltd Australia reserve the right to charge for any work carried out as a result of an invalid claim.

I. No variation to this warranty may be made or implied by any member of Edgar Edmondson Pty Ltd Australia or its Dealers unless such variation is in writing and authorised by the Company.

Australian Importer.

Edgar Edmondson Pty Ltd

Head Office
PO Box 198
Marrickville
NSW 1475
AUSTRALIA

Delivery and Shipping Address
18 Garden St
Marrickville
NSW 2204
AUSTRALIA

Office Number: 1800 BUY MOP
Fax Number: +61 (0)2 9519 0223
E-Mail: orders@edmondson.net.au
ABN: 27 000 450 144

Edco

244030 10/21 (A03)

Notes:

Distributed by:



Edgar Edmondson Pty Ltd

Head Office
PO Box 198
Marrickville
NSW 1475
AUSTRALIA

Delivery and Shipping Address
18 Garden St
Marrickville
NSW 2204
AUSTRALIA

Office Number: 1800 BUY MOP
Fax Number: +61 (0)2 9519 9223
E-Mail: orders@edmondson.net.au
ABN: 27 000 450 144

Edco