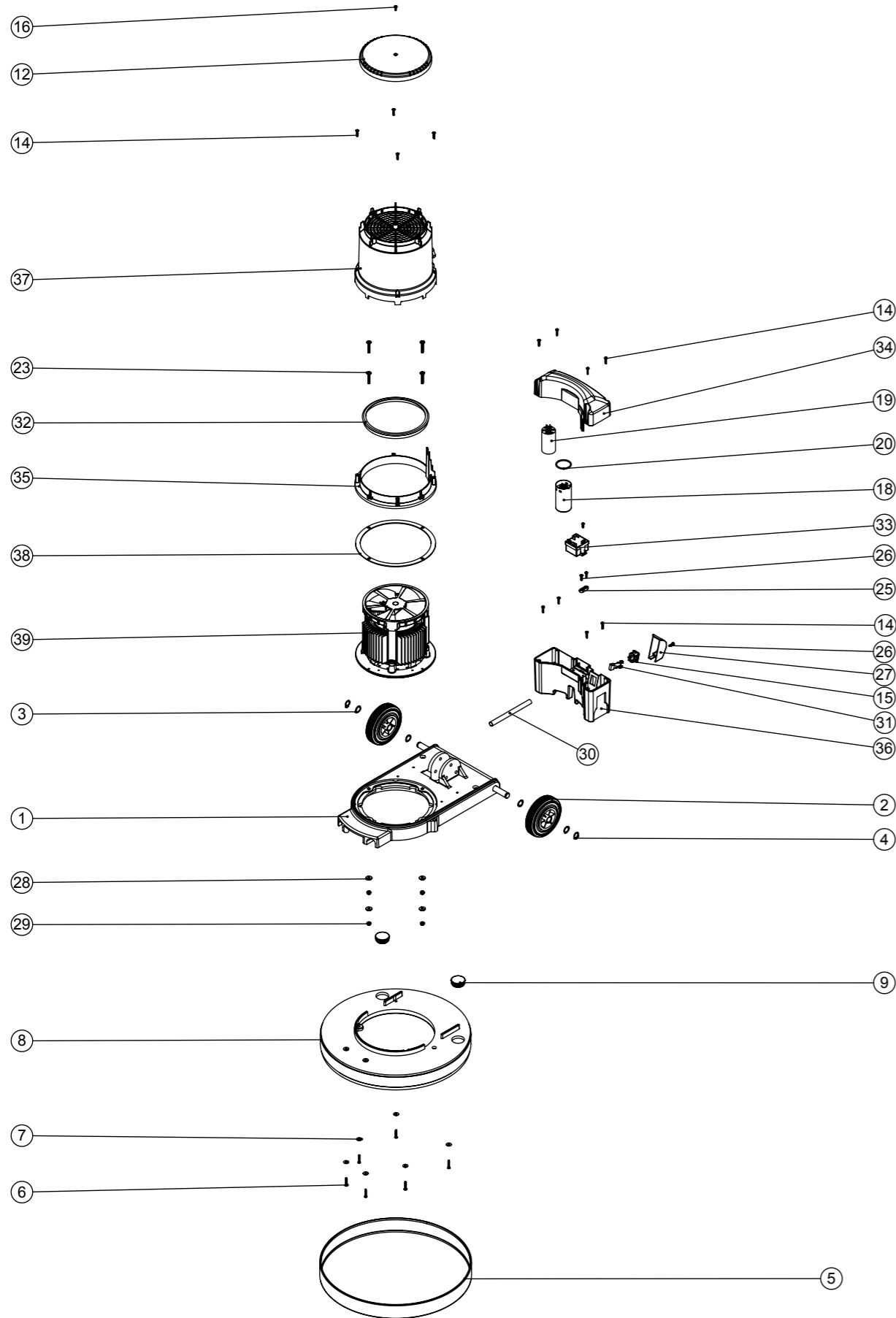


# Numatic International Spare Parts

**Model No:** HFM 1515/1523/1530/1545 EXPLODED DRAWING ASSEMBLY

234894  
DRAWING: DRW-12020 ISS:A11  
09/10/2017

NB: FOR WIRING SEE DRAWING: DRW-11701



# Numatic International Spare Parts

**Model No:** HFM 1515/1523/1530/1545 EXPLODED DRAWING ASSEMBLY

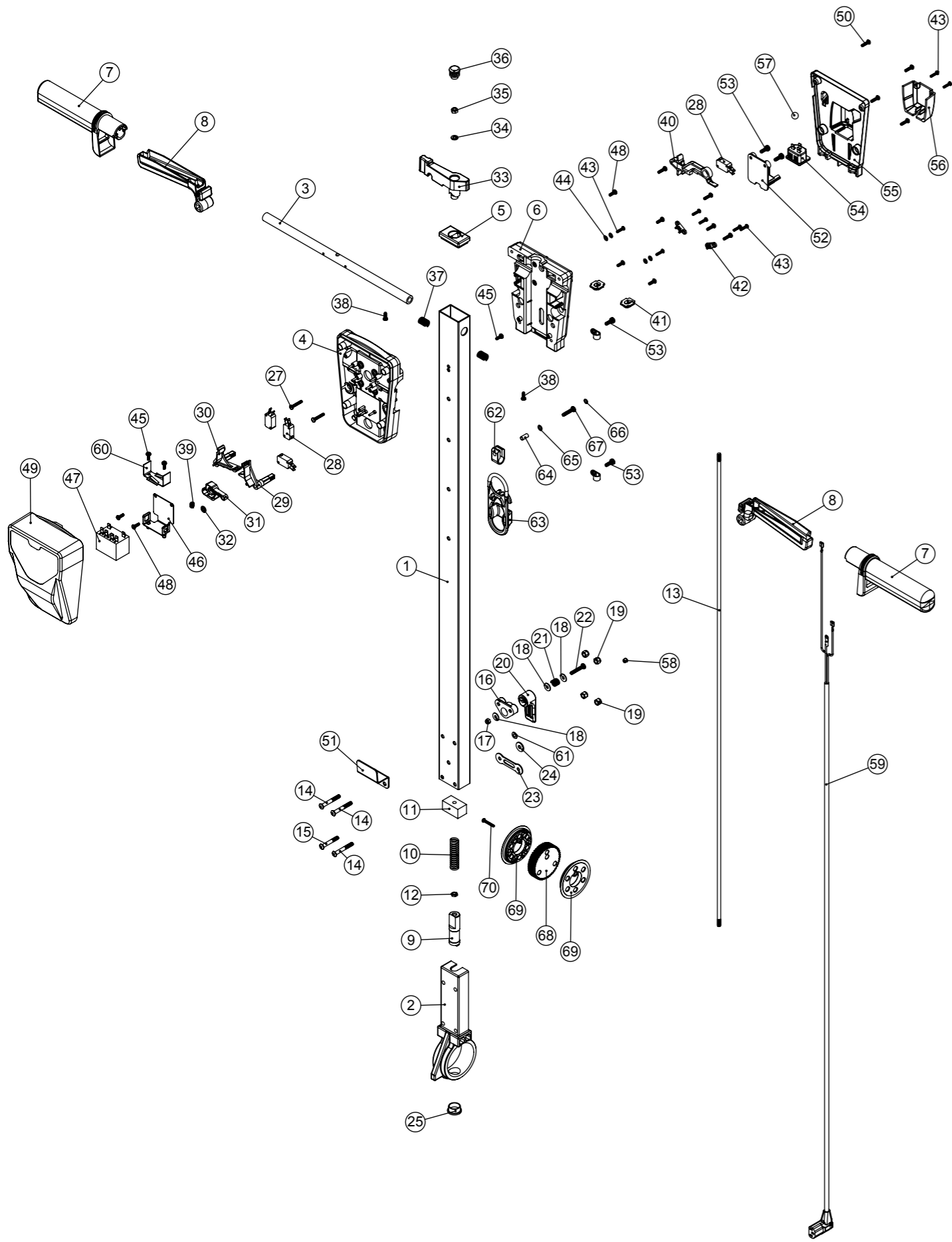
ITEM NO.	PART NO.	DESCRIPTION	Comments	Default/QTY.
1	304260	MULTIDECK BASE MOULDING SUB ASSY	UPDATED, ITEM227557 ADDED	1
2	229060	WHEEL GREY BLACK HUB		2
3	219219	21.5MM X 16.3MM WAVE WASHER		4
4	229051	EXTERNAL CIRCLIP		2
5	206466	LIGHT GREY MEDIUM BUFFER RING (RAL 7042)	G - RANGE USE 206478	1
6	219369	No8 X 1 INCH LONG POZI PAN STAINLESS STEEL PLASTITE SCREW		6
7	219644	M5 FORM G STAINLESS STEEL WASHER		6
8	330010	DECK FOR DUSTROL Y SYSTEM	G - RANGE USE 329072	1
9	229400	BLACK END STOP		2
34	237505	HFM CAPACITOR BOX TOP MOULDING (BLUE)	G - RANGE USE 905782	1
35	237500	BOTTOM SECTION MOULDING (BLUE)	G - RANGE USE 905781	1
12	237503	LID MOULDING (HFM)		1
13	219318	No6 X 1/2 INCH LONG POZI PAN PLASTITE SCREW (Z/PL)		1
14	219568	NO8.3/4 INCH LG.POZI-PAN.SCREW.STAINLESS STEEL.PLASTITE		12
15	220584	RENDAR CLIP IN PLUG		1
16	219471	M4 X 12MM LONG POZI PAN SEMS SCREW		1
18	205088	MOTOR START CAPACITOR 150MFD 280V C/W RESISTOR AND M8 STUD		1
19	220897	MOTOR RUN CAPACITOR 25 MFD 450V		1
20	208534	O RING 39.5MM ID x 3 DIA		1
36	330081	HFM CAPACITOR BOX BOTTOM MOULDING C/W INSERT	G - RANGE USE 905793	1
33	902715	SINGLE SPEED RELAY 230V, RVA6N0D		1
23	219643	M6 X 35MM LONG STAINLESS STEEL POZI PAN SCREW		4
37	330082	HFM MID SECTION MOULDING PRINTED (1500W) (BLUE)	G - RANGE USE 905780	1
25	227008	BLACK CABLE CLAMP		1
26	219914	NO6 X 5/8 INCH LONG POZI-PAN PLASTITE STAINLESS STEEL SCREW		3
27	229213	PLUG COVER		1
28	219647	M6 FORM G STAINLESS STEEL WASHER		4
29	219642	M6 STAINLESS STEEL NYLON INSERT NUT		4
30	330086	MOTOR WIRE SLEEVE		1
31	230136	SUPPRESSOR ASSEMBLY		1
32	237412	HFM TOP MOTOR GASKET		1
38	906405	HFM MOTOR SPLASH GUARD		1
39	205202	INDUCTION MOTOR 4-POLE 1500W 220-240V 50Hz		1

# Numatic International Spare Parts

**Model No:** HFM HANDLE EXPLODED DRAWING

NB: FOR WIRING SEE DRAWING: DRW-11789

Internal Code: 234899  
 DRAWING: DRW-12376 ISS:A18  
 PRO 06/06/2018



# Numatic International Spare Parts

**Model No:** HFM HANDLE EXPLODED DRAWING

ITEM:	PART No:	DESCRIPTION	FMH HENRY MODEL USE	GREY VERSION	QTY.
1	429136	HFM HANDLE TUBE PAINTED (1025mm)			1
2	900398	HANDLE CASTING MACHINED (HNS VERSION)			1
3	338269	CROSS TUBE			1
4	227576	FRONT INNER HALF MOULDING	237542		1
5	903546	HANDLE PLUG MOULDING (RED)		227582	1
6	227577	REAR INNER HALF MOULDING	237543		1
7	227580	HAND GRIP MOULDING	237544		2
8	903547	TRIGGER MOULDING (RED)		227581	2
9	229073	GEAR LOCKING PIN			1
10	229138	SPRING			1
11	229030	ANTI VIBRATION PAD			1
12	219099	M6 HALF NUT			1
13	208432	1035MM HANDLE LOCKING ROD			1
14	219881	M6 X 45MM SOCKET BUTTON HEAD SCREW			3
15	219807	M6 X 40MM LONG SOCKET BUTTON HEAD BOLT			1
16	903882	CABLE RELEASE BASE MOULDING RED		227806	1
17	219076	M5 NYLON INSERT NUT			1
18	219644	M5 FORM G STAINLESS STEEL WASHER			3
19	219088	M6 NYLON INSERT NUT			4
20	903883	CABLE RELEASE TOP MOULDING RED		227807	1
21	206599	SPRING (REF:C5514370)			1
22	219720	M5 X 30MM LONG STAINLESS STEEL POZI PAN SCREW			1
23	229139	CABLE CLAMP			1
24	219008	M6 FORM G WASHER			1
25	229099	25MM DIA HOLE PLUG			1
26	219393	P CLIP			2
27	219811	NO8 X 1 INCH LONG POZI-PAN SELF TAP SCREW			2
28	229483	SNAP ACTION SWITCH			4
29	227585	LEFT HAND SWITCH OPERATING LEVER MOULDING			1
30	227586	RIGHT HAND SWITCH OPERATING LEVER MOULDING			1
31	227587	CENTRE SWITCH OPERATING LEVER MOULDING			1
32	219805	4MM SPIREFIX			1
33	903545	ADJUSTMENT LEVER MOULDING (RED)		227583	1
34	219493	M6 NYLON WASHER			1
35	219642	M6 STAINLESS STEEL NYLON INSERT NUT			1
36	20638V	19MM BLACK TUBE END STOP			1
37	219803	TRIGGER COMPRESSION SPRING			2
38	219270	NO8 X 1/2 INCH LONG POZI PAN SELF TAP SCREW			2
39	219804	SWITCH COMPRESSION SPRING			1
40	227584	INTERLOCK LEVER MOULDING			1
41	237467	BLANKING PLUG WITH HOLE			2
42	229669	LOLINE HANDLE CABLE CLAMP			2
43	219107	NO6.5/8 INCH LG.POZI-PAN.SCREW.Z/PL.PLASTITE			8
44	219206	M4 FORM A WASHER			4
45	219471	M4 X 12MM LONG POZI PAN SEMS SCREW			3
46	303526	NUTSERTED RELAY MOUNTING BRACKET			1
47	206575	240V / 25A RELAY			1
48	219101	NO8 X 1/2 INCH LONG POZI PAN PLASTITE SCREW			6
49	229679	TRADLINE TWINTEC HANDLE FRONT COVER MOULDING	237547		1
50	219105	NO8 X 5/8 INCH LONG POZI PAN PLASTITE SCREW			8
51	329000	HANDLE BRACKET			1
52	237425	PTO SUPPORT MOULDING			1
53	219045	M5 X 16MM LONG POZI PAN SEMS SCREW			4
54	220964	APPLIANCE OUTPUT SOCKET			1
55	237426	FM REAR COVER MOULDING	237545		1
56	237427	FM PLUG COVER MOULDING	237546		1
57	229050	12MM (STAINLESS STEEL) BALL BEARING			1
58	229009	BLANKING PLUG			1
59	236161	HFM HANDLE CORD SET ASSEMBLY			1
60	206500	RELAY BRACKET			1
61	219007	M6 FORM B WASHER			1
62	219743	CABLE CLEAT			1
63	902312	CABLE STRESS RELIEF			1
64	903192	SPIROL SPACER SP100 5MM NOM ID x 14MM			1
65	219355	M5 FORM A STAINLESS STEEL WASHER			1
66	219016	M5 SHAKEPROOF WASHER			1
67	219575	M5 X 25MM LONG POZI PAN STAINLESS STEEL SCREW			1
68	900397	MINI ADJUSTMENT GEAR			1
69	900396	ADJUSTMENT GEAR SPACER			2
70	291150	NO6 X 1 INCH LONG POZI PAN SCREW S/S			1