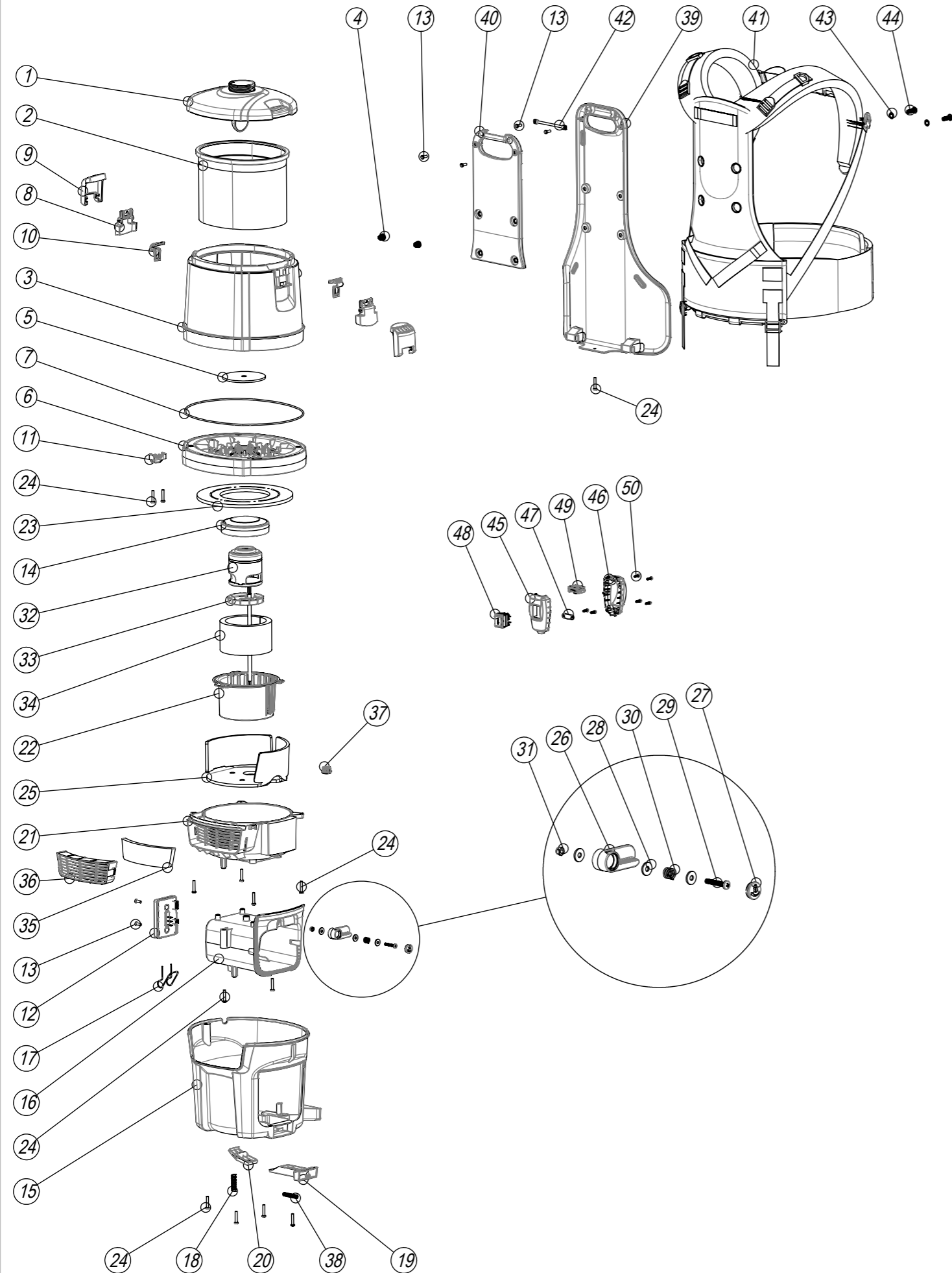


Numatic International Spare Parts

Model No: EXPLODED - RSB150 (CORDLESS BACKPACK)

911071
DRAWING: DRW-31358 ISS:A08
24/02/2021

NB: FOR WIRING SEE DRAWING: DRW-30647



Numatic International Spare Parts

Model No: EXPLODED - RSB150 (CORDLESS BACKPACK)

| ITEM NO. | PART NUMBER | DESCRIPTION | QTY | COMMENTS: |
|----------|-------------|--|-----|--|
| 1 | 910932 | DUST CONTAINER LID | 1 | |
| 2 | 910915 | SHORT BACKPACK TRITEX FILTER | 1 | |
| 3 | 910928 | DUST CONTAINER - SHORT | 1 | |
| 4 | 219453 | M8 MULTISERT | 2 | |
| 5 | 209085 | RSB BURST BAG FILTER | 1 | |
| 6 | 910922 | DUST CONTAINER BASE | 1 | |
| 7 | 910940 | SILICONE FOAM CORD SEAL | 1 | |
| 8 | 910971 | TOGGLE LEVER | 2 | SNAP TOGGLE ASSEMBLES INTO DUST CONTAINER |
| 9 | 910927 | TOGGLE LATCH | 2 | |
| 10 | 910953 | TOGGLE RETAINER | 2 | |
| 11 | 911171 | CORDLESS CABLE RETAINER | 1 | |
| 12 | 910251 | CORDLESS RUCKSACK PCB ASSEMBLY | 1 | |
| 13 | 291152 | NO8.1/2 INCH LG.T20.SCREW.Z/PL.PLASTITE | 6 | FOR 2x HARNESS PIN SCREWS ONLY: TORQUE TO 1.6Nm ± 1.5 ALL OTHER SCREWS: TORQUE TO 2.6Nm ± 1.5 |
| 14 | 911903 | CORDLESS MOTOR GASKET - CINDERSON | 1 | |
| 15 | 910919 | CORDLESS BASE COVER | 1 | |
| 16 | 910921 | BATTERY HOUSING | 1 | |
| 17 | 216655 | BATTERY RELEASE SPRING | 1 | |
| 18 | 216465 | 11MM COIL SPRING | 1 | |
| 19 | 911053 | BATTERY EJECT BUTTON | 1 | 50N MAX PUSH FORCE |
| 20 | 911049 | BATTERY LATCH | 1 | |
| 21 | 911001 | CORDLESS AIRPATH | 1 | |
| 22 | 911901 | CORDLESS AIRGUIDE - CINDERSON | 1 | |
| 23 | 910936 | ACOUSTIC MATERIAL - BASE | 1 | |
| 24 | 291082 | #8 SCREW 1"L T20 PAN HEAD P/L THREAD FORMING | 13 | TORQUE TO 2.6Nm ± 1.5 |
| 25 | 910938 | ACOUSTIC MATERIAL - SIDES | 1 | ADHESIVE STRIPS STICK TO CORDLESS AIRPATH |
| 26 | 910635 | BATTERY RETAINER | 1 | |
| 27 | 910636 | BATTERY RETAINER CAP | 1 | |
| 28 | 219005 | M5 FORM G WASHER | 3 | |
| 29 | 299020 | M5 X 30MM LONG POZI PAN SCREW | 1 | TIGHTEN UNTIL BOLT LEVEL WITH END OF NUT |
| 30 | 206599 | SPRING (REF:C5514370) | 1 | |
| 31 | 219076 | M5 NYLON INSERT NUT | 1 | |
| 32 | 911895 | SIP CINDERSON 74MM 36V MOTOR (350W/200W) | 1 | |
| 33 | 911902 | MOTOR MOUNT - CINDERSON | 1 | |
| 34 | 910941 | RUCKSACK ACOUSTIC FELT (FITTED) | 1 | |
| 35 | 911004 | RUCKSACK EXHAUST FOAM | 1 | |
| 36 | 910950 | EXHAUST GRILL | 1 | |
| 37 | 911088 | WIRE GROMMET | 1 | |
| 38 | 219732 | COMPRESSION SPRING | 1 | |
| 39 | 911051 | BACK SUPPORT MOULDING (WITHOUT MOUNTING FEATURE) | 1 | |
| 40 | 911002 | BACK SUPPORT INSERT | 1 | |
| 41 | 912533 | RUCKSACK HARNESS - RSB150/RSV150 (RED) | 1 | |
| 42 | 206353 | HARNESS PIN | 1 | |
| 43 | 219018 | M8 SHAKEPROOF WASHER | 2 | |
| 44 | 219658 | M8 X 22MM LONG SOCKET BOLT | 2 | TORQUE TO 2.6Nm ± 1.5 |
| 45 | 237594 | RSV SWITCH MODULE HOUSING (1/2) | 1 | |
| 46 | 237595 | RSV SWITCH MODULE HOUSING (2/2) | 1 | |
| 47 | 392305 | REMOTE CABLE CLAMP | 1 | |
| 48 | 903963 | SWITCH.DPDT.RKR.HV | 1 | |
| 49 | 903030 | LED BATTERY LIFE INDICATOR WITH PCB | 1 | |
| 50 | 219667 | No6 X 1/2" LONG PLASTITE SCREW | 6 | TORQUE TO 1.6Nm ± 1.5 |